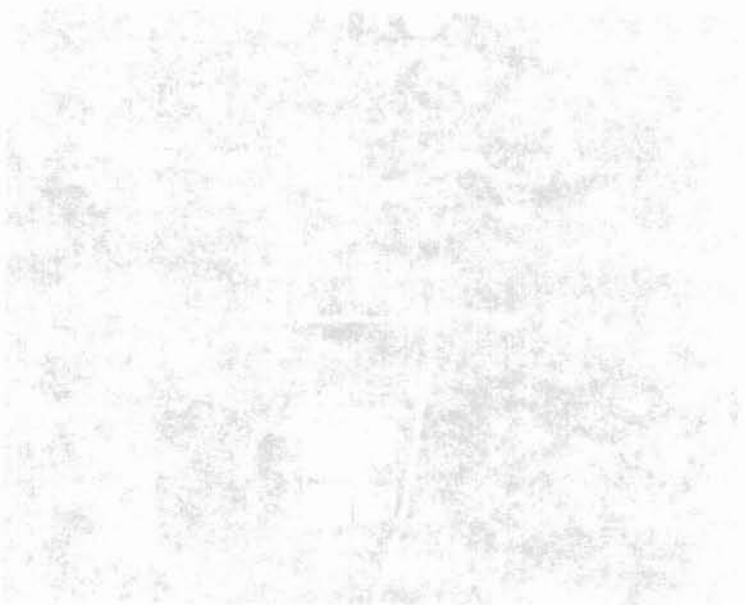
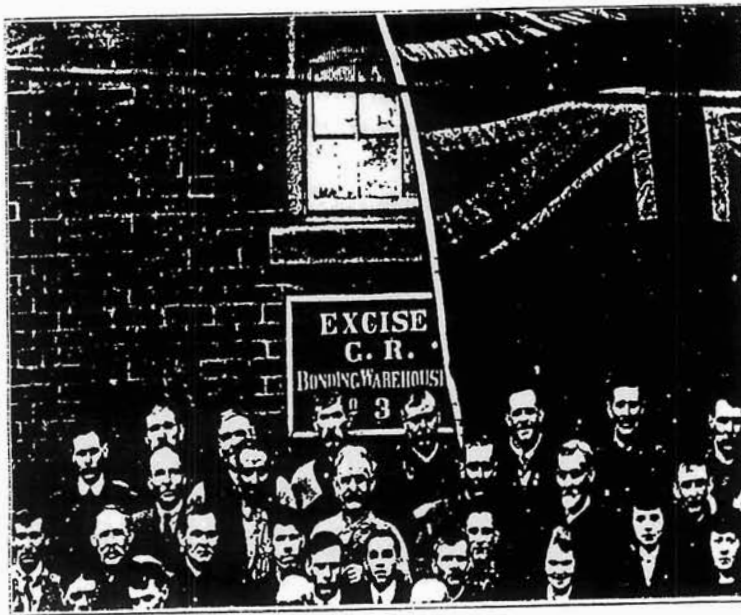


## APPENDIX B

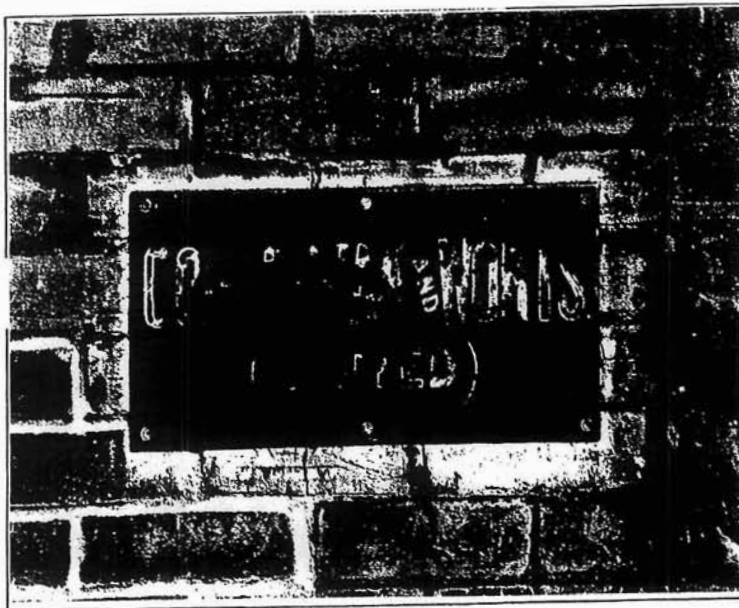
### Historic Signage Inventory





## 1917 EXCISE SIGN

Sign Message:	EXCISE G.R. (George Rex) BONDING WAREHOUSE NO. 3
Sign Location:	Maltings Building No. 35
Mounting Height:	3.2m
Materials:	black (or dark colour) with white (or light colour) lettering and border
Dimensions:	various 60cm x 90cm (approx.)
Photographic Record:	British Acetones; City of Toronto
Comments:	removed; reversed (white on black) from current excise signage

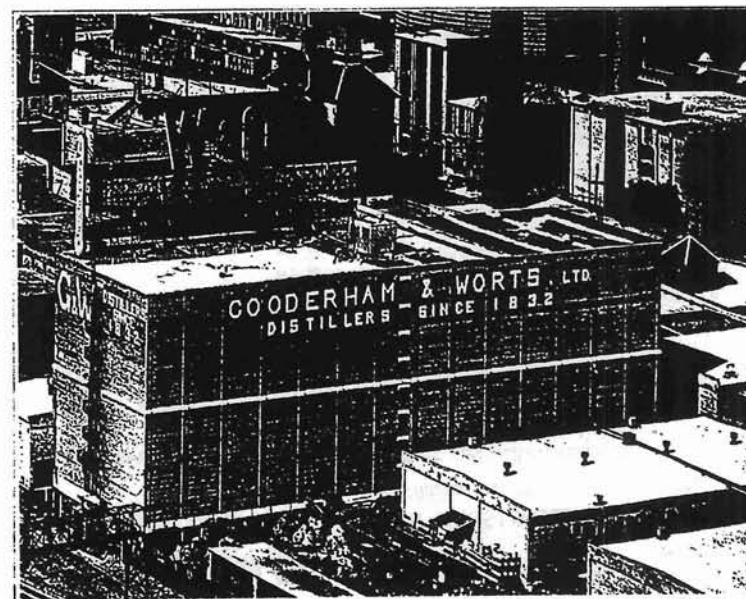


## CIRCA 1917 COMPANY PLAQUE

Sign Message:	GOODERHAM AND WORTS (LIMITED)
Sign Location:	Gooderham & Worts Plant office
Mounting Height:	1.43m
Materials:	debossed brass and black paint
Dimensions:	22cm x 47cm
Photographic Record:	1994
Comments:	the plaque was moved in 1986 to Building No. 51; previously located on Building No. 31 (the old office)

## 1927 INSITU BRICK SIGNS (2)

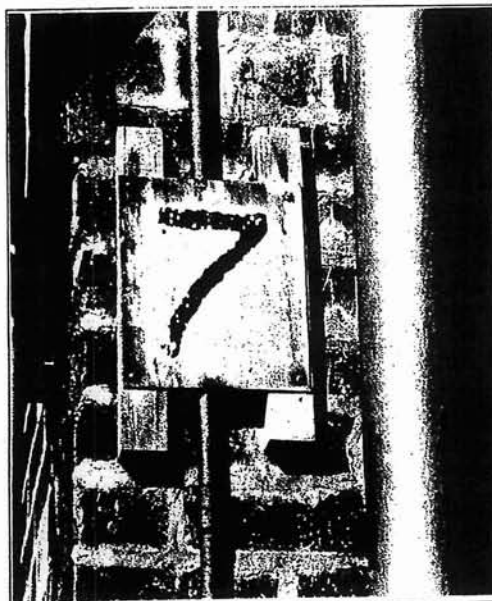
Sign Message:	GOODERHAM & WORTS LTD. DISTILLERS- SINCE 1832 (east side) GOODERHAM & WORTS LTD. DISTILLERS- SINCE 1832 (west side)
Sign Location:	south and east wall of Rack House 'M'
Mounting Height:	wall 15.8m
Materials:	contrasting glazed white brick built into brick wall
Dimensions:	46m wide x 3.3m 3.2m x 2.0m
Photographic Record:	1994
Comments:	signs likely built to face the heavily travelled railway corridor located immediately south of Rack House 'M'



## CIRCA 1927 OLDER BUILDINGS NUMBERS

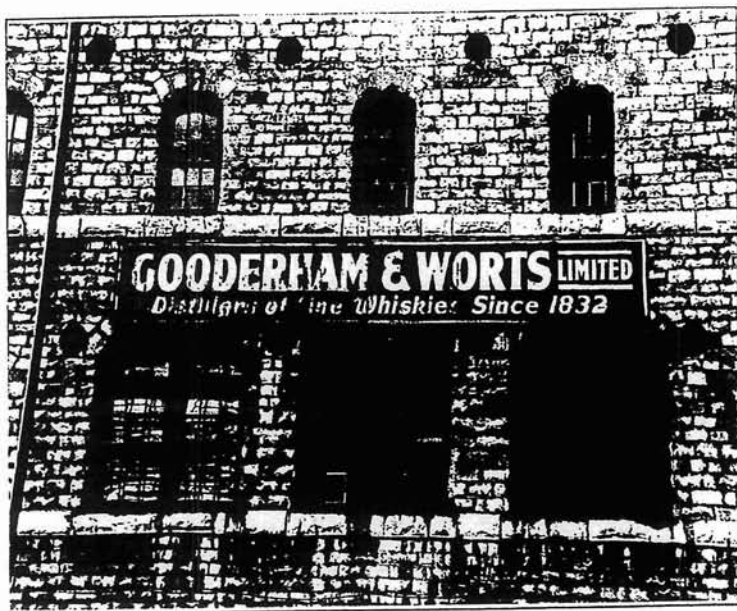
Sign Message:	BLDGS 58 59-60
Sign Location:	north building face in alley
Mounting Height:	120cm
Materials:	white paint and black lettering on galvanized sheet metal
Dimensions:	15cm x 46cm
Photographic Record:	1994
Comments:	building number predates current typical building numbers (i.e. pre-1988) and may date from building constructed in 1927





## CIRCA 1927 TRACK VALVE SIGNS

Sign Message:	1-17
Sign Location:	mounted below pipe valves on south rail siding
Mounting Height:	5m
Materials:	painted white paint with black numbers on galvanized sheet metal
Dimensions:	20xcm x 20cm
Photographic Record:	1994
Comments:	signs marked supply valves for tank cars; white paint has washed off and rust showing on edges; may date from first building numbering circa 1925

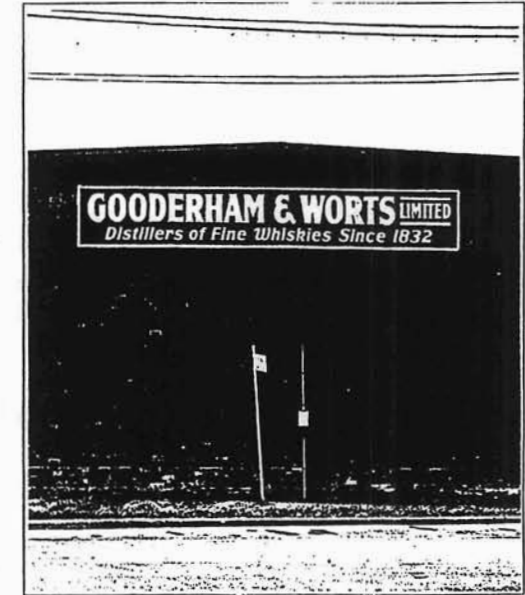
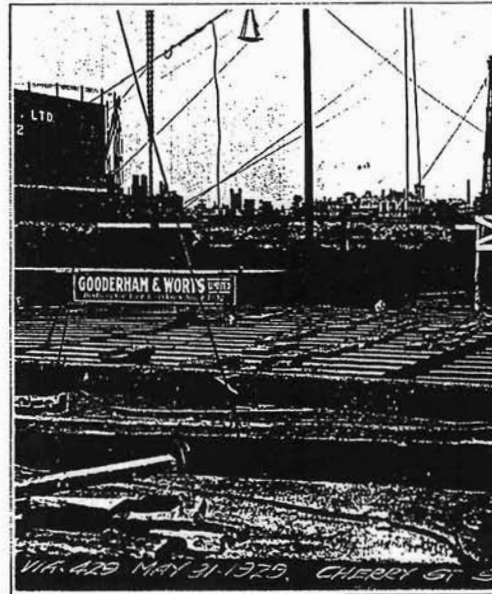


## CIRCA 1929 WALL SIGNS (3)

Sign Message:	GOODERHAM & WORTS LIMITED <i>Distillers of Fine Whiskies since 1832</i>
Sign Location:	Cherry at Mill Street: east wall of Building No. 50; north wall of Building No. 50 centered; and south wall of Stone Distillery
Mounting Height:	3.8m on Building No. 50 9.3m on Stone Distillery
Materials:	red outlined white letters on a black background with a white border, metal
Dimensions:	8.96m x 31.19m
Photographic Record:	1994; 1928 James Photographs of railway viaduct construction
Comments:	sign on Stone Distillery moved from 1st floor to 2nd floor between 1948 and 1952 photographs; similar sign on Lum- ber Shed Building No. 73 confirmed by 1928 and 1930 photographs; by 1943 the yard was leased to General Salvage Company at which time the sign probably came down

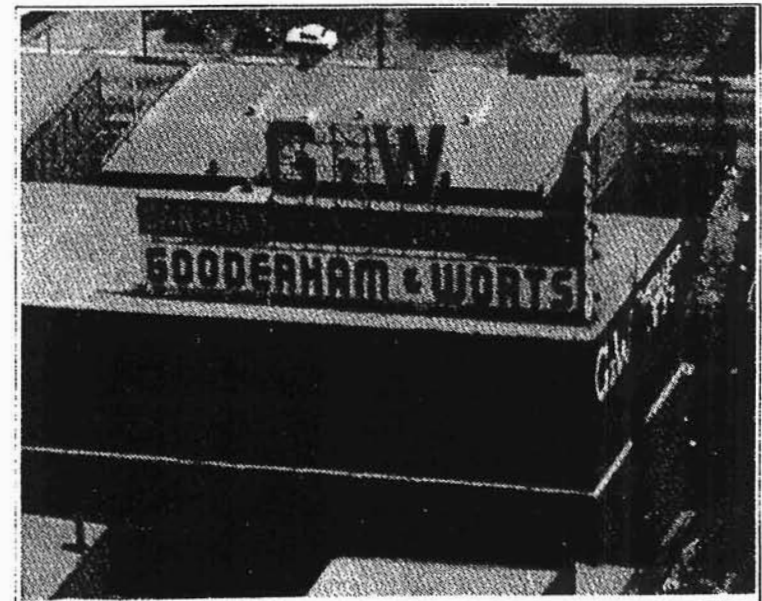
## CIRCA 1929 WALL SIGN

Sign Message:	GOODERHAM & WORTS LIMITED <i>Distillers of Fine Whiskies since 1832</i>
Sign Location:	Mill St. on Maltings Building No. 36, west wall at north end
Mounting Height:	wall 15.6m
Materials:	painted white lettering on black background with red and white border; this appears to be painted on 120cm x 240cm plywood panels
Dimensions:	5.23m x 8.053m
Photographic Record:	1994 and 1952
Comments:	sign was aimed at downtown along with the rooftop billboard and is large enough to be readable at 0.5km distance



## CIRCA 1948 ROOFTOP BILLBOARD FACES

Sign Message:	G&W CANADA'S OLDEST DISTILLERY GOODERHAM & WORTS (west side) G&W and thermometer (south side)
Sign Location:	rooftop of Rackhouse 'M'
Mounting Height:	roof 20.05m
Materials:	painted metal neon tube rectangular steelframe superstructure and catwalk
Dimensions:	superstructure: 33.5m (west); 18m x 3m (south)
Photographic Record:	circa 1948 site aerial oblique photograph (Gooderham & Worts on site collection)
Comments:	sign faced west to the downtown and the thermometer faced south

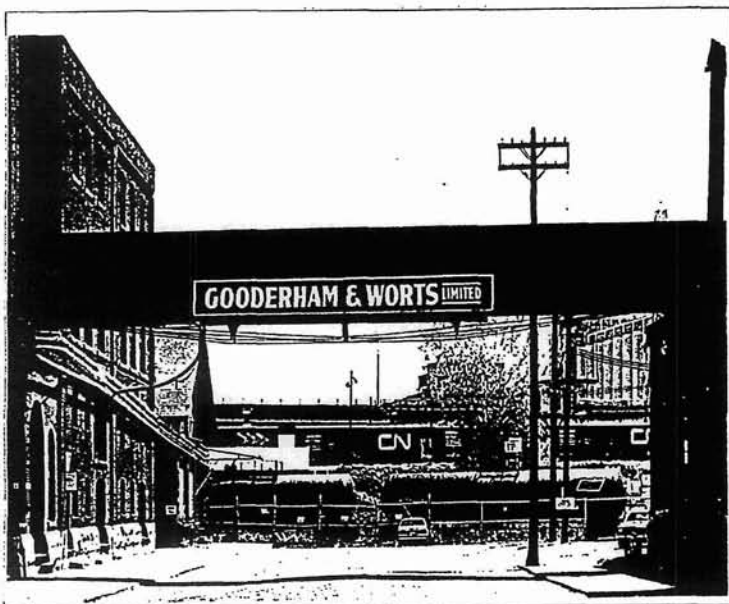






### CIRCA 1950 HAND PAINTED SIGN

Sign Message:	PRESS DOWN TO RING BELL FOR SHIPPER DRUMS ONLY (arrow)
Sign Location:	south door of Long Room Building No. 62A
Mounting Height:	door 3.46m
Materials:	black letters on white background plywood
Dimensions:	49cm wide x 31 cm high
Photographic Record:	1994
Comments:	probably painted by loading dock staff
Condition:	delapidated

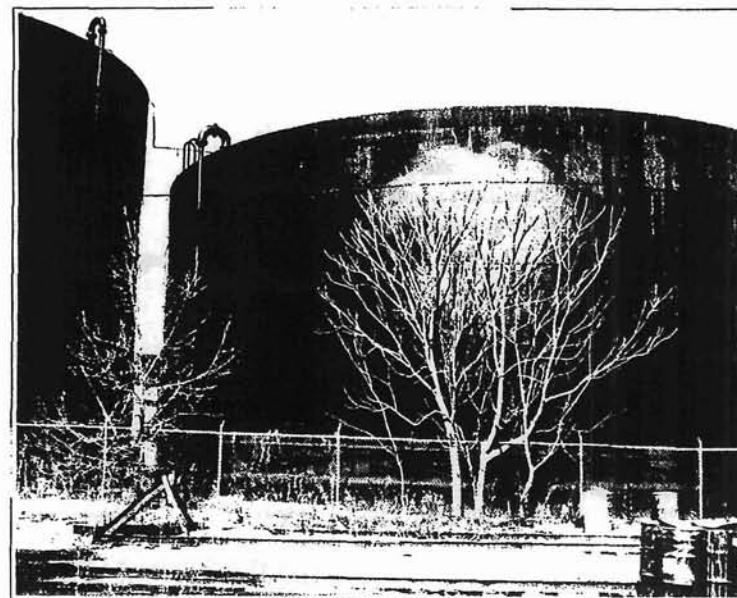


### CIRCA 1953 BRIDGE SIGN (2)

Sign Message:	GOODERHAM & WORTS LIMITED (north & south side)
Sign Location:	main bridge over Trinity St. between Building Nos. 57 & 31
Mounting Height:	6.21m centered at bottom of bridge
Materials:	painted red outlined white letters on a black background and white border on plywood
Dimensions:	1.04m x 10.75m
Photographic Record:	1994 and 1952
Comments:	these signs over a public street were probably unique in Toronto at the time

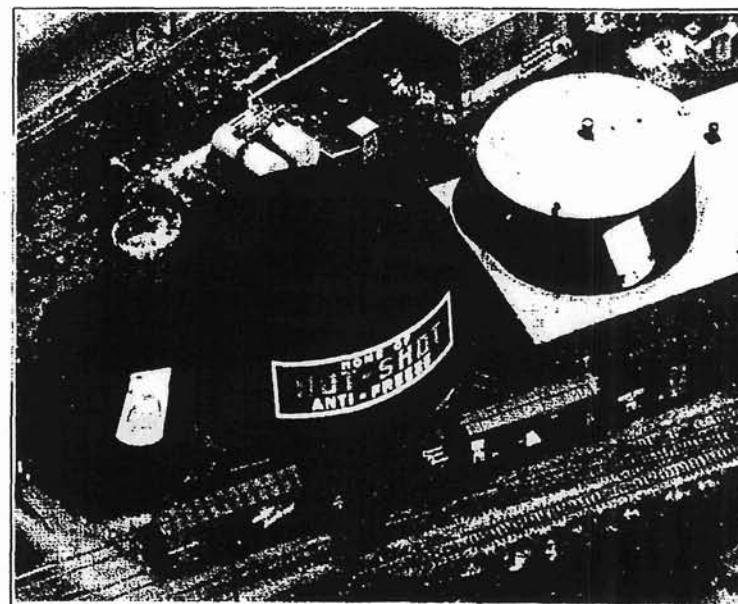
## CIRCA 1953 PAINTED TANK SIGN (2 of 3)

Sign Message:	HOT-SHOT ANTI-FREEZE (Antifreeze tin in perspective)
Sign Location:	south side of Glycol Tank No. 4 and Molasses Tank No. 2
Mounting Height:	6.2m
Materials:	paint on steel tank probably black background with red and white topography
Dimensions:	4.2m x 6.2m
Photographic Record:	circa 1953 aerial oblique, Northway Gestalt Collection (Provincial Archives)
Comments:	painted over



## CIRCA 1953 TANK SIGN (1 of 3)

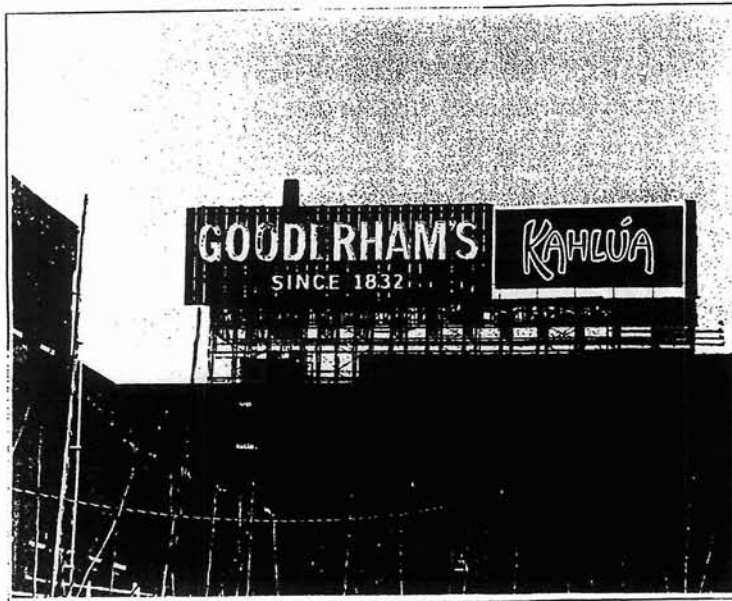
Sign Message:	HOME OF HOT-SHOT ANTI-FREEZE
Sign Location:	southside of Molasses Tank
Mounting Height:	3.7m
Materials:	coloured paint probably red and white lettering on a steel tank
Dimensions:	5.7m x 18.5m (curved)
Photographic Record:	aerial oblique, Provincial Archives
Comments:	painted over; traces of signs remain





## CIRCA 1953 BILLBOARD

Sign Message:	G&W GOODERHAM & WORTS LIMITED Distillers of FINE WHISKIES Since 1832
Sign Location:	west face of Bldg. 36
Mounting Height:	7.4m
Materials:	painted plywood (12 sheets) with wood frame border, white painted lettering on red and black background
Dimensions:	4.8m x 6.5m
Photographic Record:	1994 aerial oblique Ontario Archives
Comments:	advertising aimed toward downtown



## CIRCA 1960 ROOFTOP BILLBOARD (3)

Sign Message:	GOODERHAM'S SINCE 1832, KAHLUA (west side); CANADIAN CLUB C.C. (east side); C.C. (south side)
Sign Location:	roof of Rack House 'M'
Mounting Height:	roof 20.05m
Materials:	painted metal slats, neon tube, fluorescent tube, metal halide flood lights, rectangular steel frame superstructure and catwalks
Dimensions:	superstructure: 9.6m x 9.7m (south) x 33.5m (east & west)
Photographic Record:	1994
Comments:	Billboard likely built to take advantage of the motorists view from the Gardiner Expressway; replacing an earlier billboard of 1948 vintage.
Condition:	operating and maintained by Neon Art



### CIRCA 1963 SECURITY SIGNAGE (3)

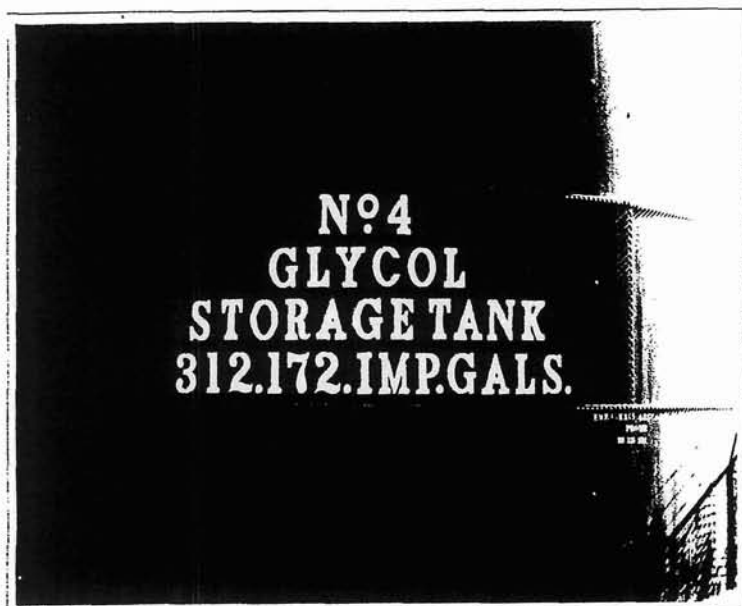
Sign Message:	GOODERHAM & WORTS LIMITED LICENSED DISTILLERS CONSOLIDATED ALCOHOLS LIMITED LICENSED DISTILLERS
Sign Location:	north door, Stone Distillery
Mounting Height:	2.5m
Materials:	black painted on white, white paint on black on steel sheet
Dimensions:	G&W 2m x 10cm (1m radius); Consolidated Alcohols 2m x 10cm
Photographic Record:	1994
Comments:	site specific, curved sign and rare sign other than that of Gooderham & Worts



### CIRCA 1963

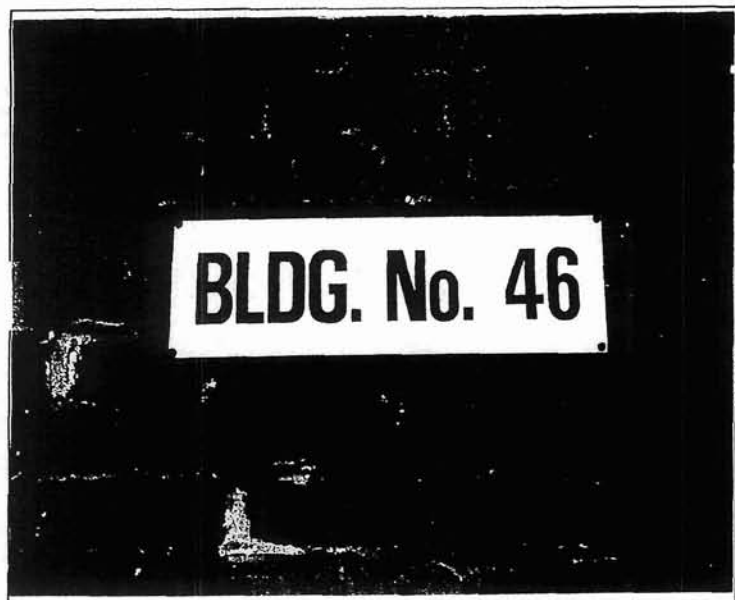
Sign Message:	CONSOLIDATED ALCHOLS LIMITED LICENSED DISTILLERS
Sign Location:	unknown
Mounting Height:	unkown
Materials:	metal on plywood with wood frame black lettering on white background
Dimensions:	50cm x 1260cm
Photographic Record:	1994
Comments:	replaced by 1988 signage





### CIRCA 1970 TANK STENCIL SIGN

Sign Message:	No. 4 GLYCOL STORAGE TANK 312.172.IMP.GALS. emergency response phone (519) 339-3711 (Dow Chemical emergency response number, still operable)
Sign Location:	west end of site
Mounting Height:	1.7m
Materials:	white paint on black steel tank
Dimensions:	1.69m x 3.67m
Photographic Record:	1994
Comments:	6 figure Imperial measure idiosyncratic accuracy

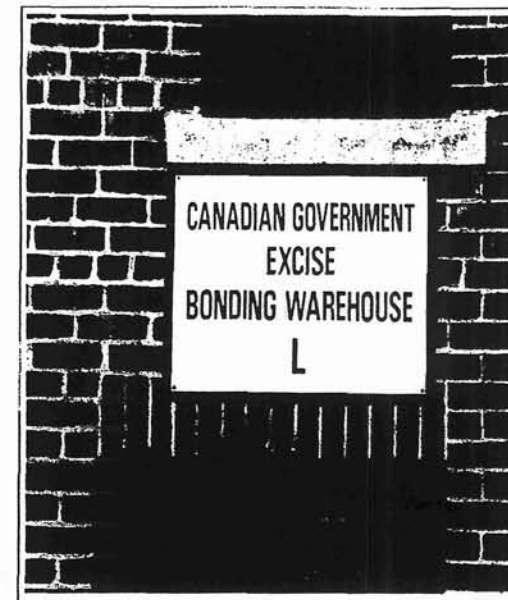


### 1988 BUILDING NUMBERS (typical, about 30)

Sign Message:	e.g. BLDG No. 46
Sign Location:	brick pilaster or wall of main facade; generally, one sign per building.
Mounting Height:	1.46m wall and pilaster
Materials:	black letters, black border on white background on galva- nized steel
Dimensions:	61m x 18cm varies in length
Photographic Record:	1994
Comments:	replaced small 10cm x 10cm building numbers

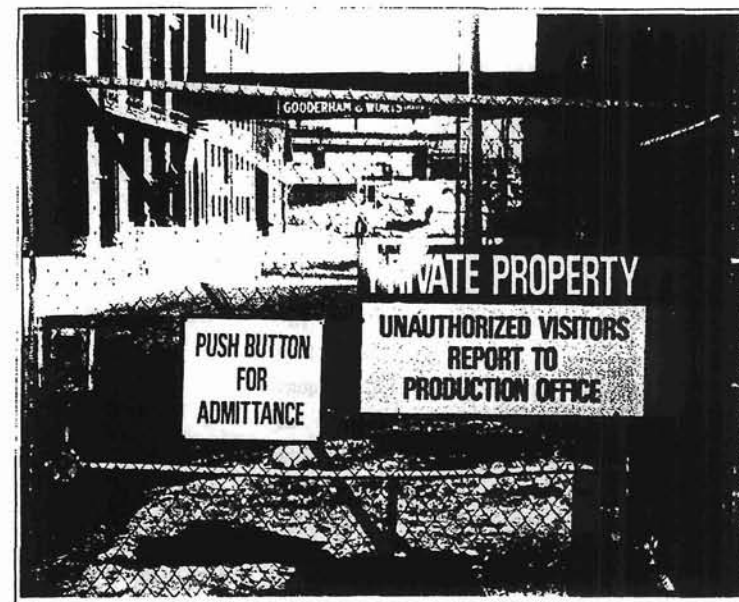
## CIRCA 1988 EXCISE SIGN

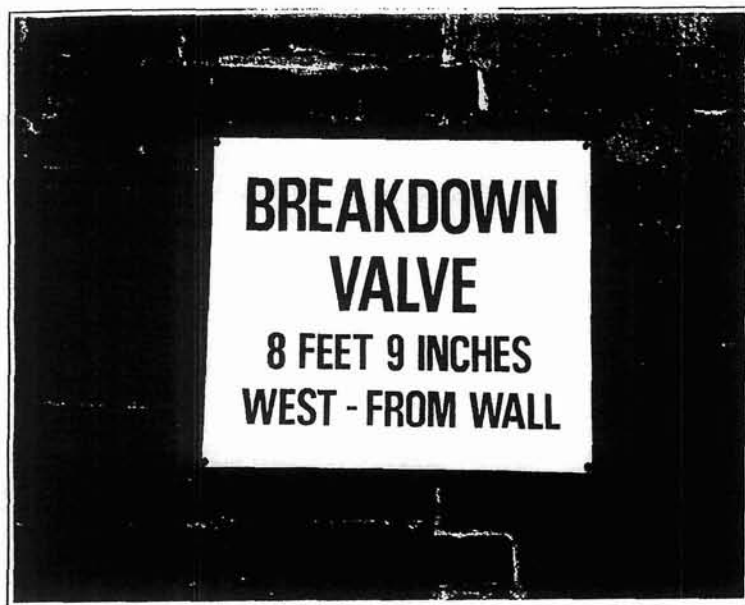
Sign Message:	CANADIAN GOVERNMENT EXCISE BONDING WAREHOUSE 'L'
Sign Location:	typical Rack House 'H' & 'T' and Bldg. No. 74, right side of centre door mounted onto brick panel
Mounting Height:	3.25m
Materials:	painted red lettering, black border, white background on plywood
Dimensions:	78cm x 56cm
Photographic Record:	1994
Comments:	no reference to royalty (G.R.) as in 1917 excise sign; reversed lettering from historic 1917 sign



## CIRCA 1988 SECURITY SIGNAGE (3)

Sign Message:	PUSH BUTTON FOR ADMITTANCE; PRIVATE PROPERTY UNAUTHORIZED VISITORS REPORT TO PRODUCTION OFFICE;
Sign Location:	main gate fence, Trinity at Mill St.
Mounting Height:	gate fence 90cm varies
Materials:	painted metal black letters and border on white background; painted metal yellow letters on black; black letters on yellow with black border
Dimensions:	45cm x 60cm; 60cm x 120cm
Photographic Record:	1994
Comments:	signs and gates installed after street closure in 1979





## CIRCA 1988 PROCESS INFORMATION SIGN

Sign Message:	BREAKDOWN VALVE 8 FEET 9 INCHES WEST - FROM WALL
Sign Location:	west side of Paint Shop, Building No. 63
Mounting Height:	2m
Materials:	painted black letters and border on white background
Dimensions:	35cm x 56cm
Photographic Record:	1994

### *Gooderham and Worts Distillery Complex La Distillerie Gooderham and Worts*

The seeds of Canada's largest 19th-century distilling firm were sown in 1837 when a still was set up on this site to convert surplus grain from an 1832 grist mill into whisky. Exploiting new technologies and commercial opportunities, Gooderham and Worts grew steadily, paralleling Toronto's rise as a manufacturing centre. With the large stone distillery erected in 1859-61 and brick malthouse, kilns, warehouses, shops and offices built before 1900, this complex is an outstanding example of Victorian industrial design in terms of integrity, historical associations and aesthetic qualities.

L'origine de la plus grande distillerie canadienne du XIXe siècle remonte à un moulin érigé en 1832 et auquel on ajouta un alambic en 1837. Exploitant des techniques nouvelles et de nouveaux débouchés, Gooderham and Worts connut un rythme constant de croissance, parallèle à celui qui éleva Toronto au rang de centre manufacturier. L'édifice de pierre, érigé en 1859-1861 pour les alambics, et les bâtiments de brique construits avant 1900 pour les malteries, fours, entrepôts, ateliers et bureaux, forment un ensemble industriel victorien remarquable par son intégrité, son esthétique et ses liens avec l'histoire.

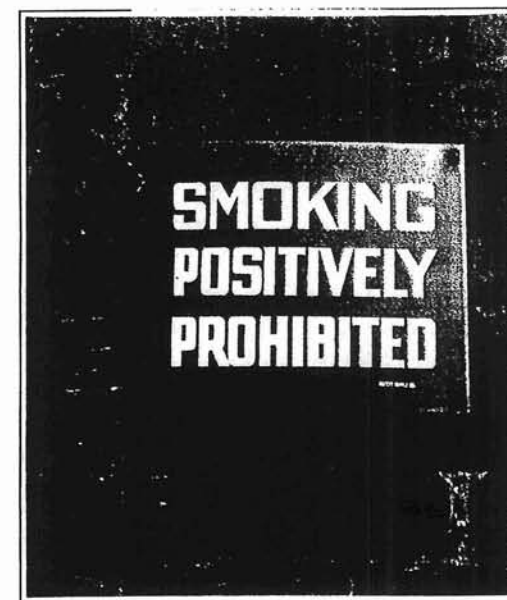
HISTORIC SITES AND MONUMENTS BOARD OF CANADA  
COMMISSION DES LIEUX ET MONUMENTS HISTORIQUES DU CANADA  
GOVERNMENT OF CANADA - GOUVERNEMENT DU CANADA

## 1989 HISTORIC PLAQUE

Sign Message:	see photograph
Sign Location:	on Trinity Street at Mill Street beside Building No. 36
Mounting Height:	post mounted 1.2m
Materials:	brass painted and polished
Dimensions:	69cm x 77 cm
Photographic Record:	1994
Comments:	Historic Sites and Monuments Board of Canada

## GENERIC SAFETY AND PARKING SIGNAGE

Sign Message:	NO SMOKING; SAFETY SHOWER; STOP PROCEED WITH CAUTION; NO PARKING THIS SIDE OF POST; SMOKING POSITIVELY PROHIBITED
Sign Location:	various
Mounting Height:	various
Materials:	various vacuum-formed plastic, painted metal
Dimensions:	various
Photographic Record:	1994
Comments:	typical signage available at the Safety Supply Company

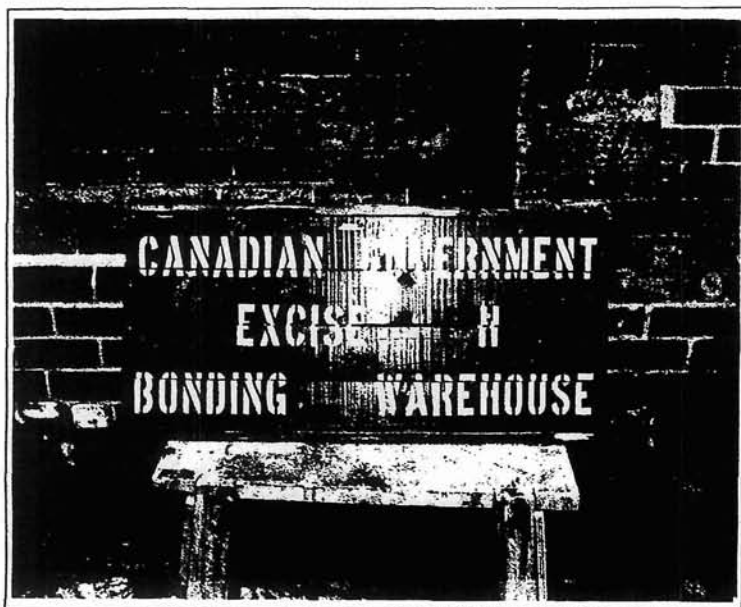


## 1992 LEASING SIGN

Sign Message:	THIS SITE IS MANAGED BY DRIVERS JONAS FOR INFORMATION CALL 362-2637 SPACE AVAILABLE FOR LEASING
Sign Location:	perimeter fence between Bldg. Nos. 48 & 49 facing Mill St.
Mounting Height:	120cm
Materials:	masonite, blue and purple lettering on white background
Dimensions:	90cm x 90cm
Photographic Record:	1994
Comments:	post plant closure signage







## UNKNOWN EXCISE

Sign Message:	CANDIAN GOVERNMENT EXCISE H BONDING WAREHOUSE
Sign Location:	Warehouse H (Building 44)
Mounting Height:	unkown
Materials:	white stencil on black painted background 2cm x 9cm resawn wood baords and frame
Dimensions:	43cm x 110cm
Photographic Record:	1994
Comments:	taken down & replaced by 1988 signage similar to Excise D (Rack House 'D') sign