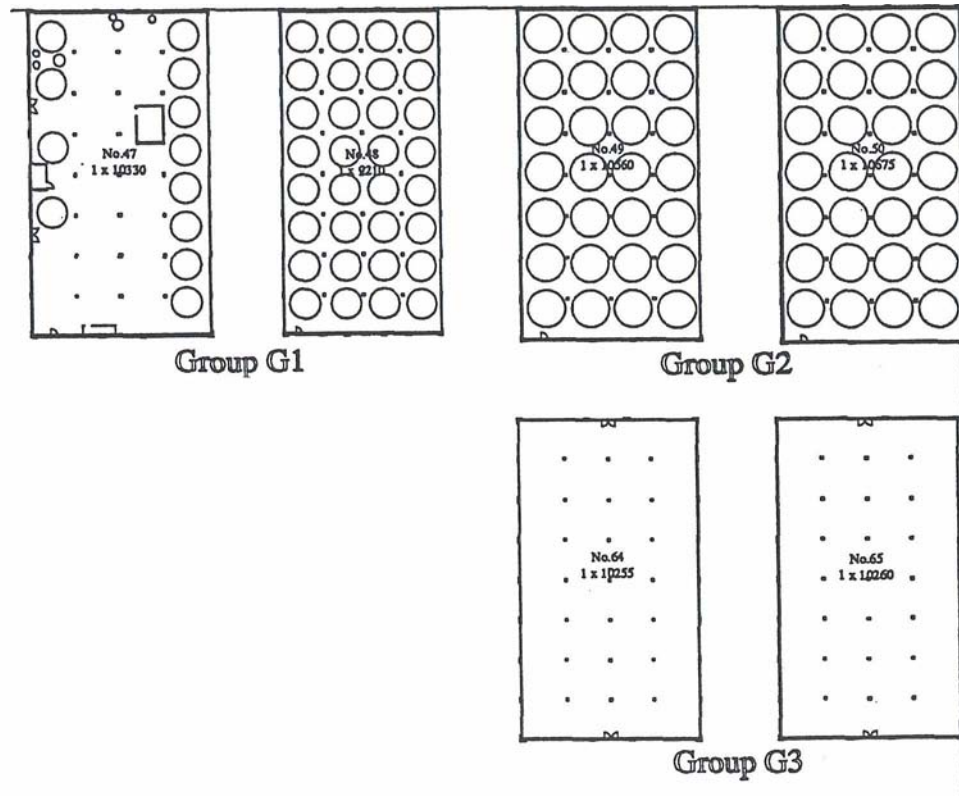


**GROUP G: Tank and Rack Warehouses
Floor Plan**



EQUIPMENT SUMMARY

BUILDING #47

Floor 1

- 47-1-1 Duplex Pump
- 47-1-2 Copper Kettle
- 47-1-3 Duplex Pump
- 47-1-4 Duplex Pump
- 47-1-5 Duplex Pump
- 47-1-6 Duplex Pump

Floor 2 (Penthouse)

- 47-2-7 Scale and Scale Tank
- 47-2-8 Filter

BUILDING #48

No Equipment Observed

BUILDING #49

No Equipment Observed

BUILDING #50

No Equipment Observed

BUILDING #64

First Floor

- 64-1-1 Barrel Hoist

BUILDING #65

First Floor

- 65-1-1 Barrel Hoist



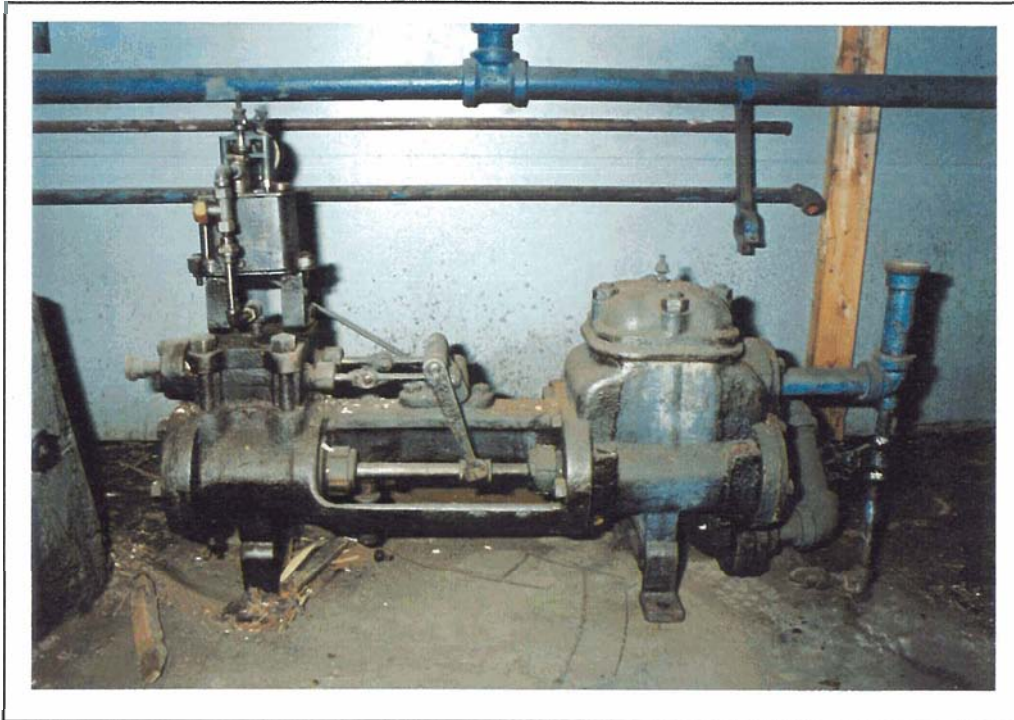
47-1-1 Duplex Pump



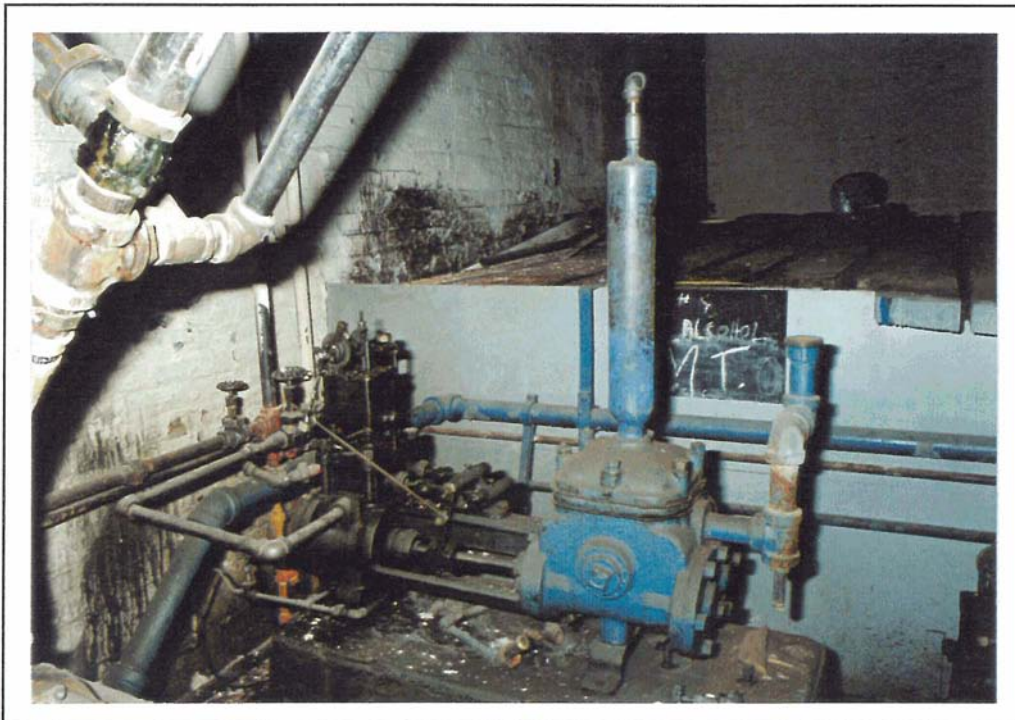
47-1-2 Mixing Kettle

| | | | | |
|--------------|--|--------------------|-------------------|---------------------------|
| | | | | ITEM NO. 47-1-1 |
| LOCATION | Building #47 Mixing | Floor: 1 | Compass: S | |
| ITEM NAME | Duplex Pump C1900 | Quantity: 1 | | |
| MARKINGS | None Observed | | | |
| MATERIALS | Primary: Cast iron and machined steel | | | |
| | Secondary: | | | |
| DIMENSIONS | Height: 20" | Width: 3" | Depth: 10" | |
| CONDITION | Incomplete | | | |
| USAGE | A. Distillery: Liquids transfer. | | | |
| | B. General: | | | |
| SIGNIFICANCE | | | | |

| | | | | |
|--------------|--|--------------------------|-------------------|---------------------------|
| | | | | ITEM NO. 47-1-2 |
| LOCATION | Building #47 Mixing | Floor: 1 | Compass: N | |
| ITEM NAME | Mixing Kettle | Quantity: 1 | | |
| MARKINGS | Stencilled | "NO. 19" "MIX KETTLE" | | |
| MATERIALS | Primary.. Formed and rivetted copper | | | |
| | Secondary: Iron steam pipes Coopered wood base | | | |
| DIMENSIONS | Height: 4'6" | Width: 5'D | Depth: | |
| CONDITION | Serviceable | | | |
| USAGE | A. Distillery: | | | |
| | B. General: Unknown | | | |
| SIGNIFICANCE | | | | |



47-1-3 Duplex Pump



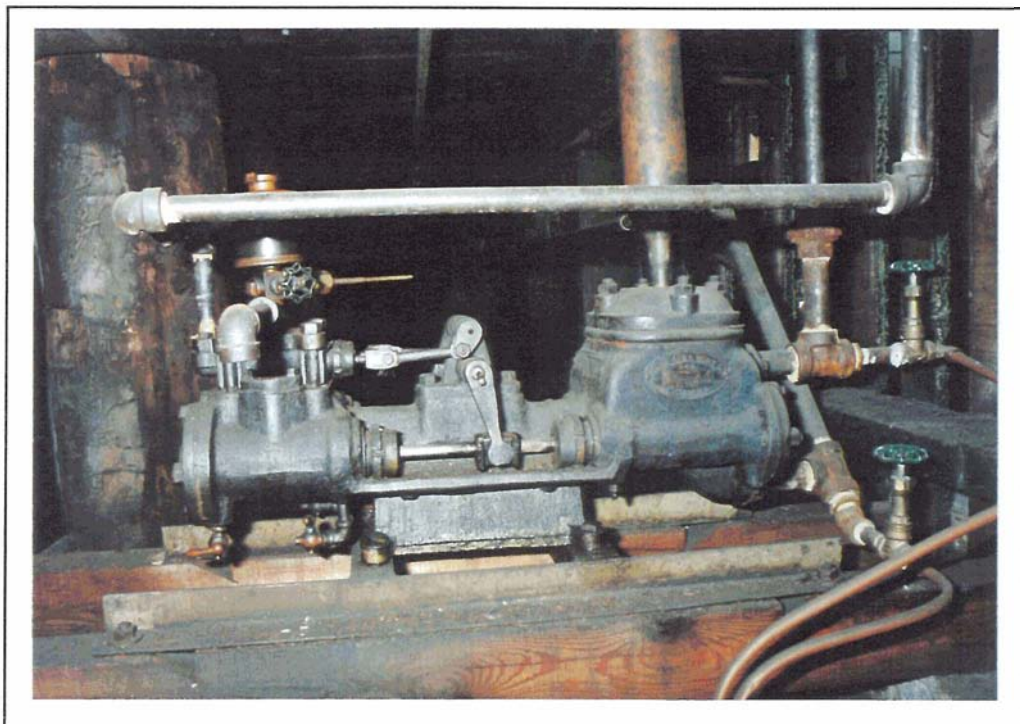
47-1-4 Duplex Pump

| | | | | |
|--------------|---|--------------------|-------------------|---------------------------|
| | | | | ITEM NO. 47-1-3 |
| LOCATION | Building #47 Mixing | <i>floor:</i> 1 | <i>Compass:</i> N | |
| ITEM NAME | Duplex Pump | <i>Quantity:</i> 1 | | |
| MARKINGS | Cast | "WORTHINGTON" | | |
| MATERIALS | <i>Primary:</i> Iron casting and machined steel | | | |
| | <i>Secondary</i> | | | |
| DIMENSIONS | <i>Height:</i> 24" | <i>Width:</i> 3' | <i>Depth:</i> 12" | |
| CONDITION | Out of service | | | |
| USAGE | A. <i>Distillery:</i> Alcohol transfer. | | | |
| | B. <i>General:</i> | | | |
| SIGNIFICANCE | Related to denatured alcohol products. | | | |

| | | | | |
|--------------|--|------------------------------|-------------------|---------------------------|
| | | | | ITEM NO. 47-1-4 |
| LOCATION | Building #47 Mixing | <i>Floor:</i> 1 | <i>Compass:</i> N | |
| ITEM NAME | Duplex Pump | <i>Quantity:</i> 1 | | |
| MARKINGS | (On plate) | "BUILT BY HENRY WORTHINGTON" | | |
| MATERIALS | <i>Primary:</i> Cast iron and machined steel | | | |
| | <i>Secondary..</i> | | | |
| DIMENSIONS | <i>Height:</i> 3' | <i>Width:</i> 4' | <i>Depth:</i> 12" | |
| CONDITION | Serviceable | | | |
| USAGE | A. <i>Distillery:</i> Alcohol transfer. | | | |
| | B. <i>General:</i> | | | |
| SIGNIFICANCE | Related to denatured alcohol products. | | | |



47-1-5 Duplex Pump



47-1-6 Duplex Pump

ITEM NO.
47-1-5

LOCATION Building #47 Mixing **Floor:** 1 **Compass:** W

ITEM NAME Duplex Pump **Quantity:** 1

MARKINGS (On plate) "WORTHINGTON"

MATERIALS **Primary:** Cast iron and machined steel
Secondary: Brass expansion chamber

DIMENSIONS **Height:** 24" **Width:** 3' **Depth:** 10"

CONDITION Serviceable

USAGE A. **Distillery:** Transfer of alcohol.
B. **General:**

SIGNIFICANCE Related to denatured alcohol products.

ITEM NO.
47-1-6

LOCATION Building #47 Mixing **Floor:** 1 **Compass:** E

ITEM NAME Duplex Pump C1890-1900 **Quantity:-** 1

MARKINGS (On plate) "FAIRBANKS-MORSE CO."
"CHICAGO"
"SER. NO. 13189" "SIZE 3 X 2 X 4"

MATERIALS **Primary:** Cast iron and machined steel
Secondary: Copper expansion chamber

DIMENSIONS **Height:** 2' **Width:** 2' 6" **Depth:** 10"

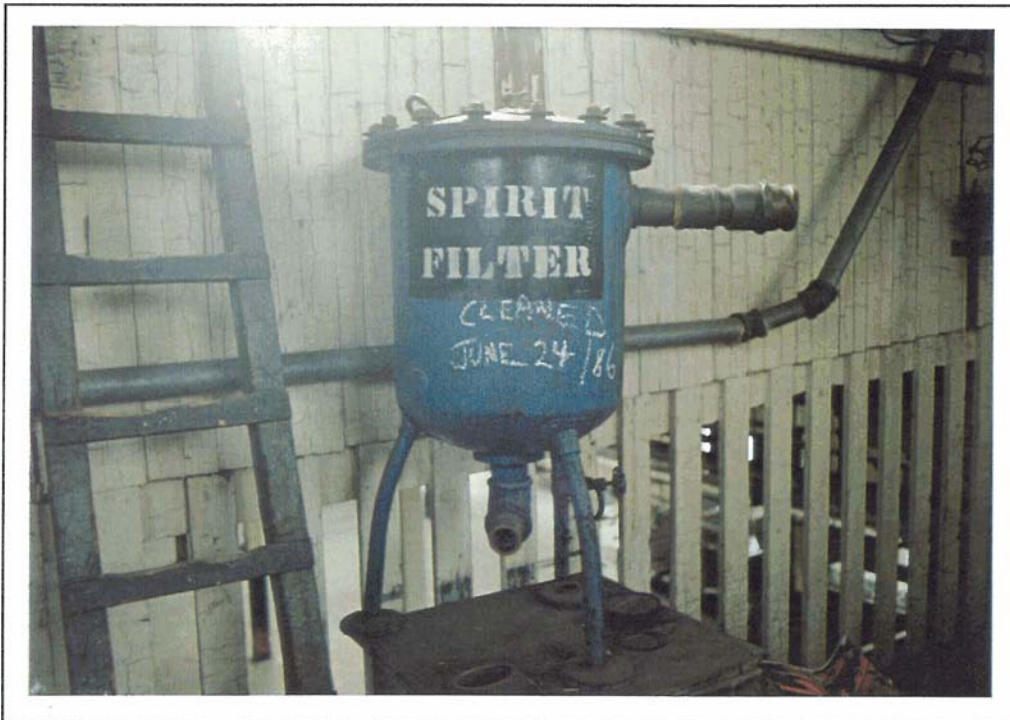
CONDITION Serviceable

USAGE A. **Distillery:** Alcohol transfer.
B. **General:**

SIGNIFICANCE Related to denatured alcohol products.



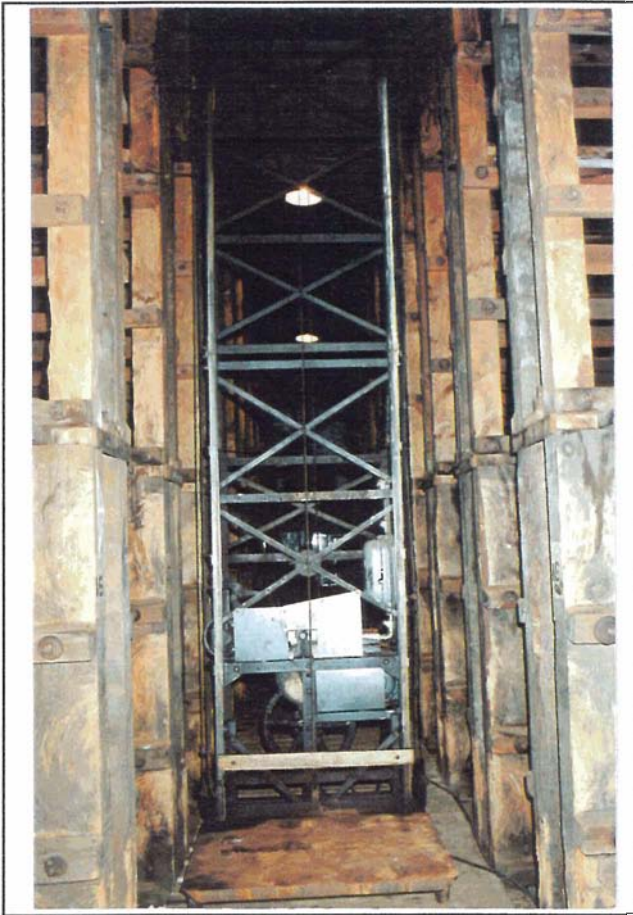
47-2-7 Scale and Scale Tank



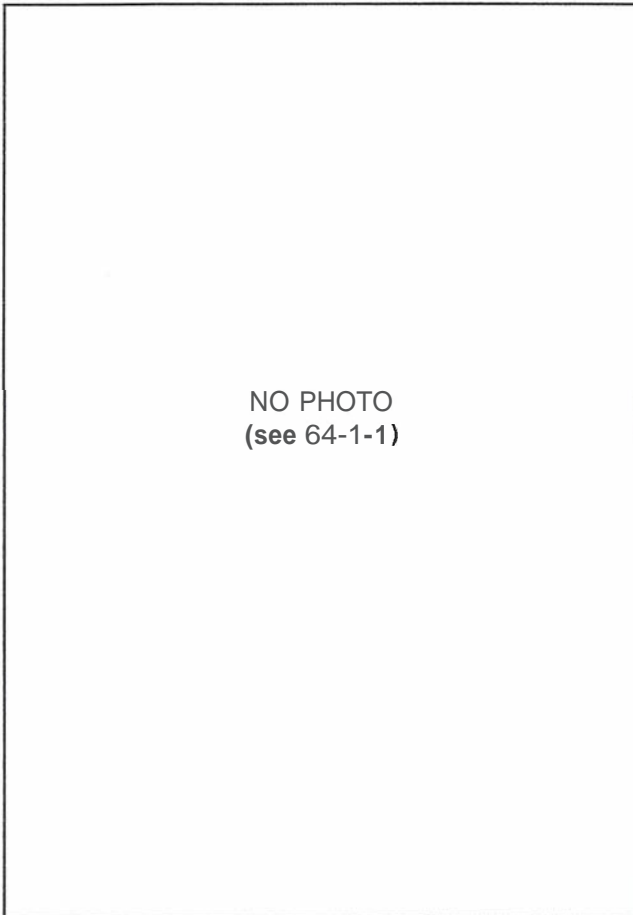
47-2-8 Drum Filter

| | | | |
|--------------|---|--------------------|---------------------------|
| | | | ITEM NO. 47-2-7 |
| LOCATION | Building #47 Mixing | floor: 2 | Compass: N |
| ITEM NAME | Scale and Scale Tank C1900 | Quantity: 1 | |
| MARKINGS | Stencil "NO. 17 SCALE TANK" Stencil "FAIRBANKS" Beam "FAIRBANKS PATENT" | | |
| MATERIALS | Primary: Painted, formed and rivetted copper Cast steel linkages and pivot towers | | |
| | Secondary:- Wood stand | | |
| DIMENSIONS | Height: 10" | Width: 7'D | Depth: |
| CONDITION | Serviceable | | |
| USAGE | A. Distillery: Receiver for alcohol transfer from other locations via hose manifold. | | |
| | B. General: | | |
| SIGNIFICANCE | Related to denaturing operations. | | |

| | | | |
|--------------|---|--------------------|---------------------------|
| | | | ITEM NO. 47-2-8 |
| LOCATION | Building #47 Mixing | Floor: 2 | Compass: N |
| ITEM NAME | Drum Filter | Quantity: 1 | |
| MARKINGS | Stencil "SPIRIT FILTER" | | |
| MATERIALS | Primary: Cast and machined steel | | |
| | Secondary.. Brass fittings | | |
| DIMENSIONS | Height: 42" | Width: 17"D | Depth: |
| CONDITION | Out of service | | |
| USAGE | A. Distillery: Filter alcohol during transfer. | | |
| | B. General: | | |
| SIGNIFICANCE | Related to denatured alcohol products. | | |



64-1-1 Barrel Hoist



65-1-1 Barrel Hoist

| | | | | |
|--------------|---|--|-------------------|----------------------------|
| | | | | ITEM NO. 64-1-1 |
| LOCATION | Building #64 Rack House | Floor: 1 | Compass: C | |
| ITEM NAME | Barrel Hoist C1940 | Quantity: 1 | | |
| MARKINGS | (On plate) | "SWIFTER LIFTER" "ECONOMY ENGINEERING CO." "DESIGNERS & MANUFACTURERS" "CHICAGO & NEW YORK" | | |
| MATERIALS | Primary: Fabricated steel Secondary: Electric motor, controls | | | |
| DIMENSIONS | Height: 21' | Width: 4'6" | Depth: 5' | |
| CONDITION | Serviceable | | | |
| USAGE | A. Distillery,- To hoist barrels into multi-level racking. B. General: | | | |
| SIGNIFICANCE | Central to maturing operations - maturing. | | | |

| | | | | |
|--------------|--|--|-------------------|----------------------------|
| | | | | ITEM NO. 65-1-1 |
| LOCATION | Building #65 Rack House | Floor: 1 | Compass: C | |
| ITEM NAME | Barrel Hoist | Quantity 1 | | |
| MARKINGS | (On plate) | "SWIFTER LIFTER" "ECONOMY ENGINEERING CO." "DESIGNERS & MANUFACTURERS" "CHICAGO & NEW YORK" | | |
| MATERIALS | Primary: Fabricated steel Secondary: Electric motor, controls | | | |
| DIMENSIONS | Height: 21' | Width: 4'6" | Depth: 5' | |
| CONDITION | Serviceable | | | |
| USAGE | A. Distillery: To hoist barrels into multi-level racking. B. General: | | | |
| SIGNIFICANCE | Central to maturing operations - maturing. | | | |