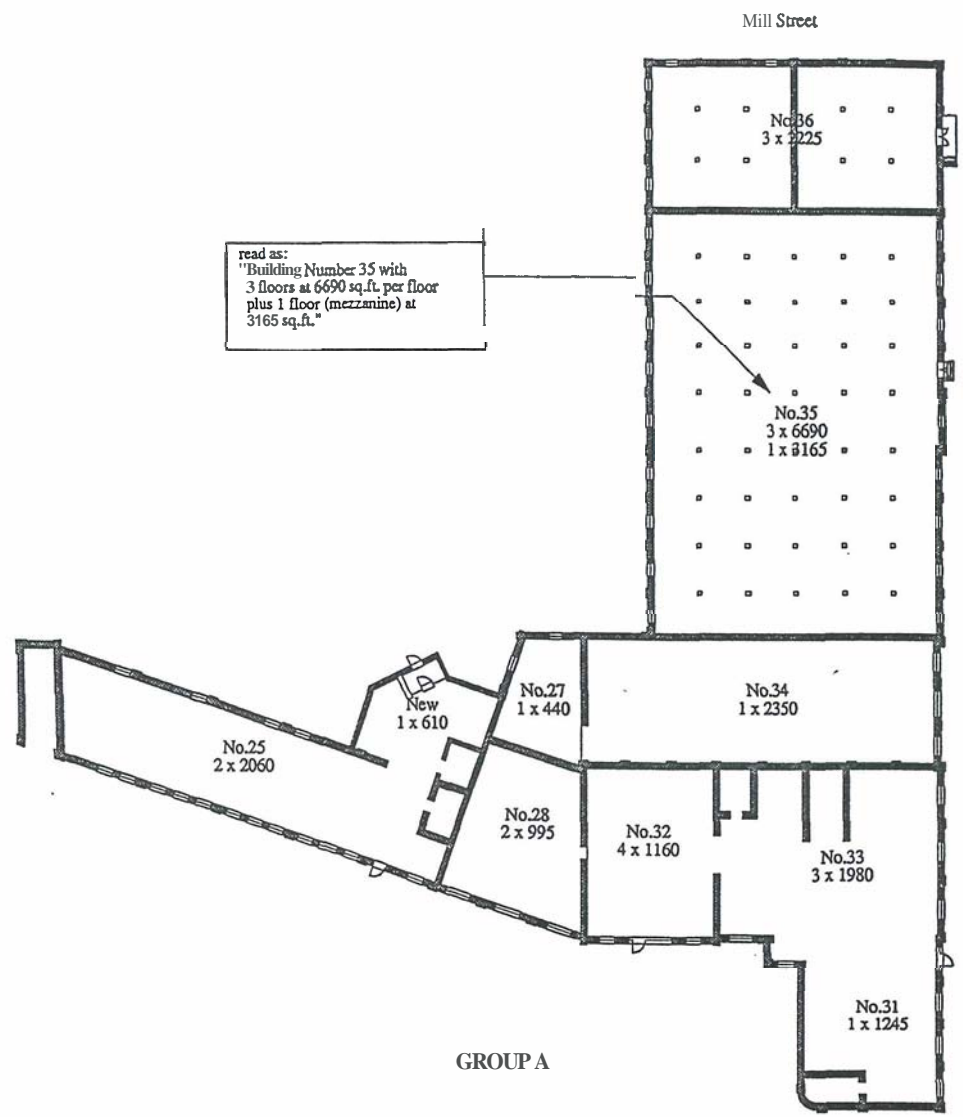


**GROUP A: Malt House and H.W. Offices
Floor Plan**



EQUIPMENT SUMMARY

BUILDING #34
Floor 1
34-1-1 Desk

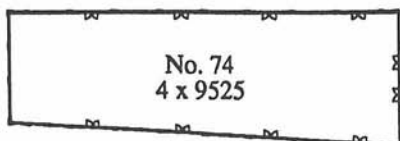
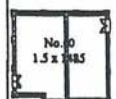
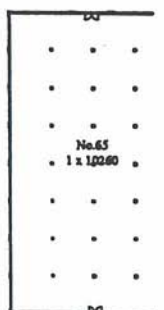
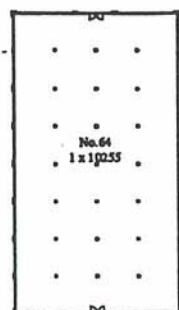
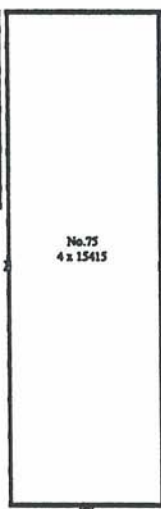
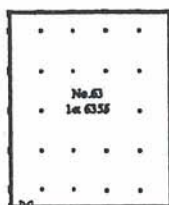
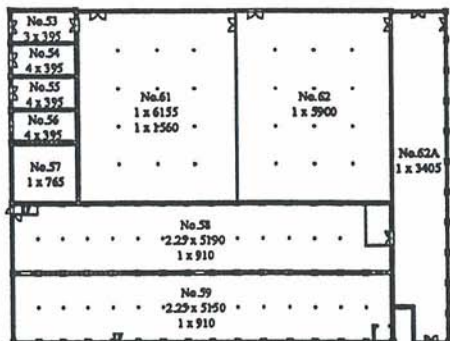
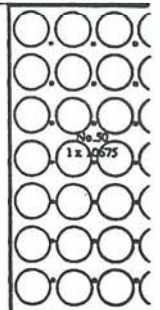
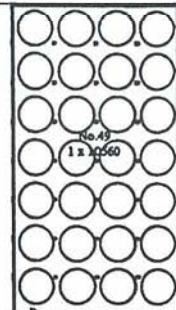
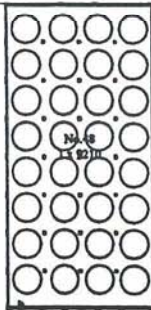
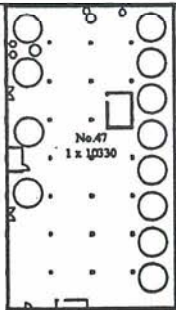
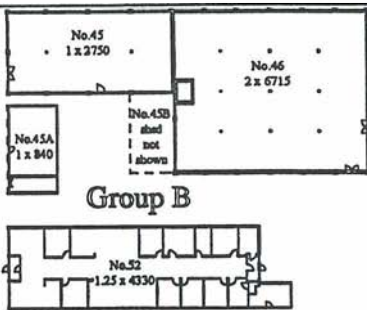
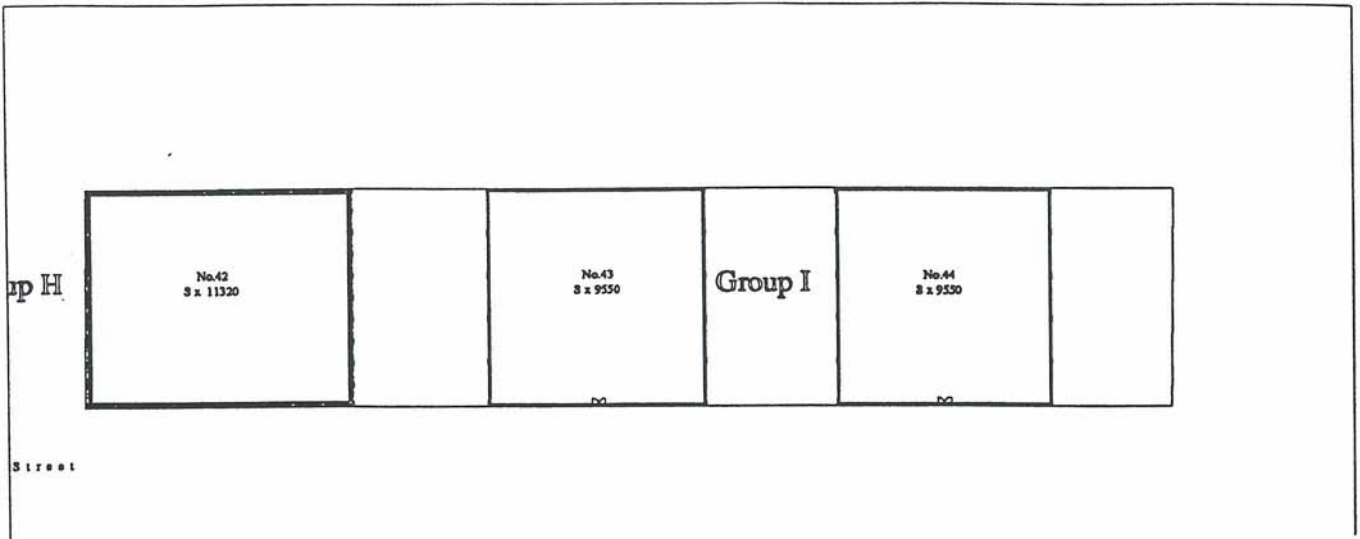
BUILDING #35
Floor 1
35-1-1 Gas Lighting Fixture
35-1-2 Gas Lighting Fixture
35-1-8 Elevator Car

BUILDING #36
Floor 1
36-1-1 Barrel Tongs

Floor 2
No Equipment Observed

Floor 3
35-3-3 Barrel Scale

Floor 4
35-4-4 Hand Windlass
35-4-5 Barrel Ramp
35-4-6 Dump Trough
35-4-7 Elevator Winding
Mechanism



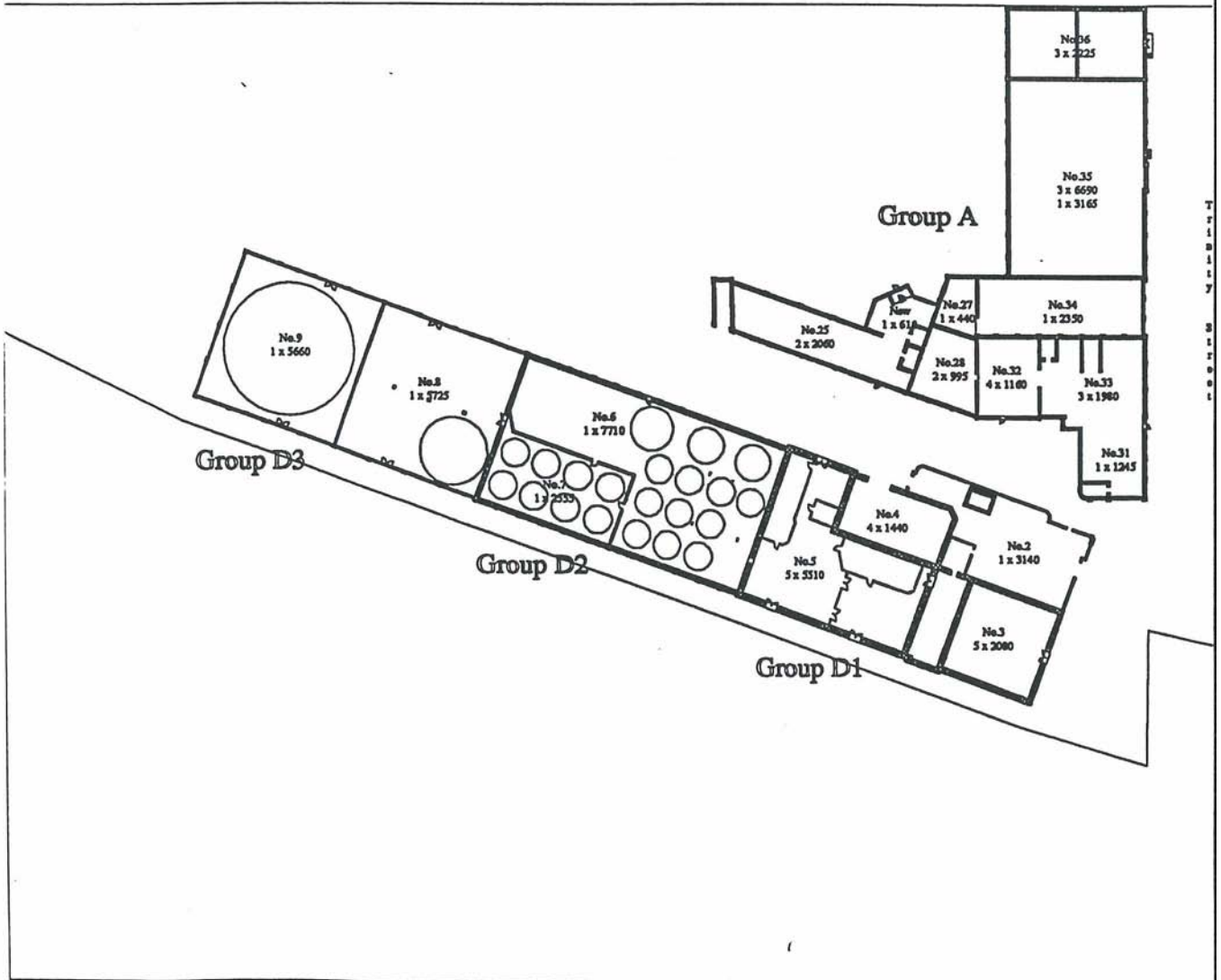
Group F

SITE PLAN

GOODERHAM & WORTS Mill Street, Toronto Overall Plan 1 : 1000

Group

M 111





34-1-1 Desk

ITEM NO.
34-1-1

LOCATION Building #34 Office *Floor: 1* *Compass: W*

ITEM NAME Desk C1880 *Quantity: 1*

MARKINGS None Observed

MATERIALS *Primary:* Painted wood

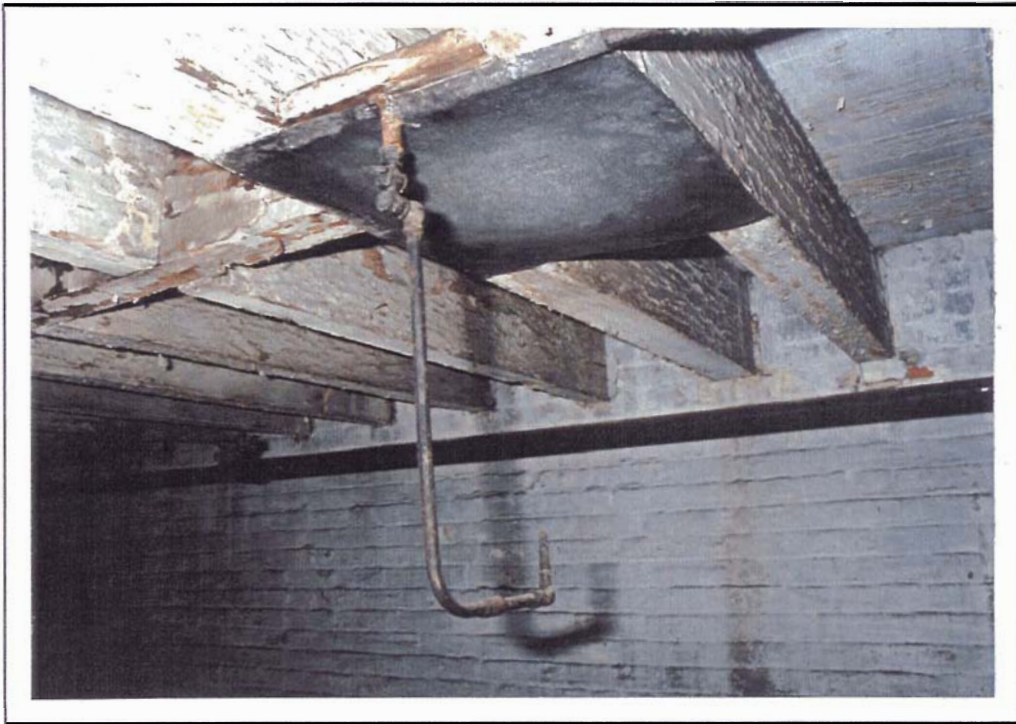
Secondary:-

DIMENSIONS *Height: 61"* *Width: 66"* *Depth: 31"*

CONDITION

USAGE A. *Distillery:*
B. *General:* Accounting/record keeping.

SIGNIFICANCE Period office practice.



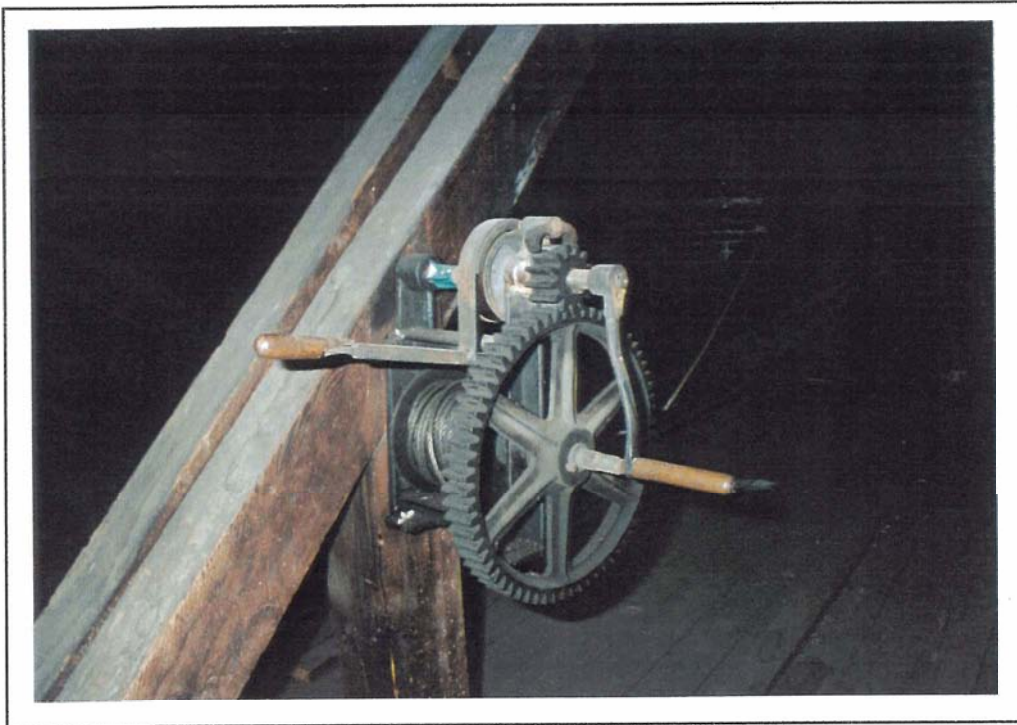
35-1-112 Gas tight Fixture



35-3-3 Barrel Scale

				ITEM NO. 35-1-1 35-1-2
LOCATION	Building #35 Malting	Floor: 1	Compass: S	
ITEM NAME	Gas Light Fixture C1900	Quantity: 2		
MARKINGS	None Observed			
MATERIALS	Primary: Black iron pipe			
	Secondary.. Valve and jet in brass			
DIMENSIONS	Height: 18"	Width: 1/2"	Depth: 10"	
CONDITION	Unknown			
USAGE	A. Distillery:			
	B. General: To illuminate malting floor.			
SIGNIFICANCE	Indicative of early lighting technology, pre-dates electrification.			

				ITEM NO. 35-3-3
LOCATION	Building #35 Malting	floor: 3	Compass: E	
ITEM NAME	Barrel Scale (Incomplete) C1900-1920	Quantity: 1		
MARKINGS	"FAIRBANKS" in stencil on cross beam			
MATERIALS	Primary: Wood legs and cross beam			
	Secondary: Iron lifting lever			
DIMENSIONS	Height: 5'6"	Width: 6'0"	Depth: 2'8"	
CONDITION	Poor condition, lacking balance beam and weights.			
USAGE	A. Distillery: To weigh full barrels of alcohol for excise purposes.			
	B. General:			
SIGNIFICANCE	Weight for excise purposes is central to distillery maturing functions.			



35-4-4 Hand Winch



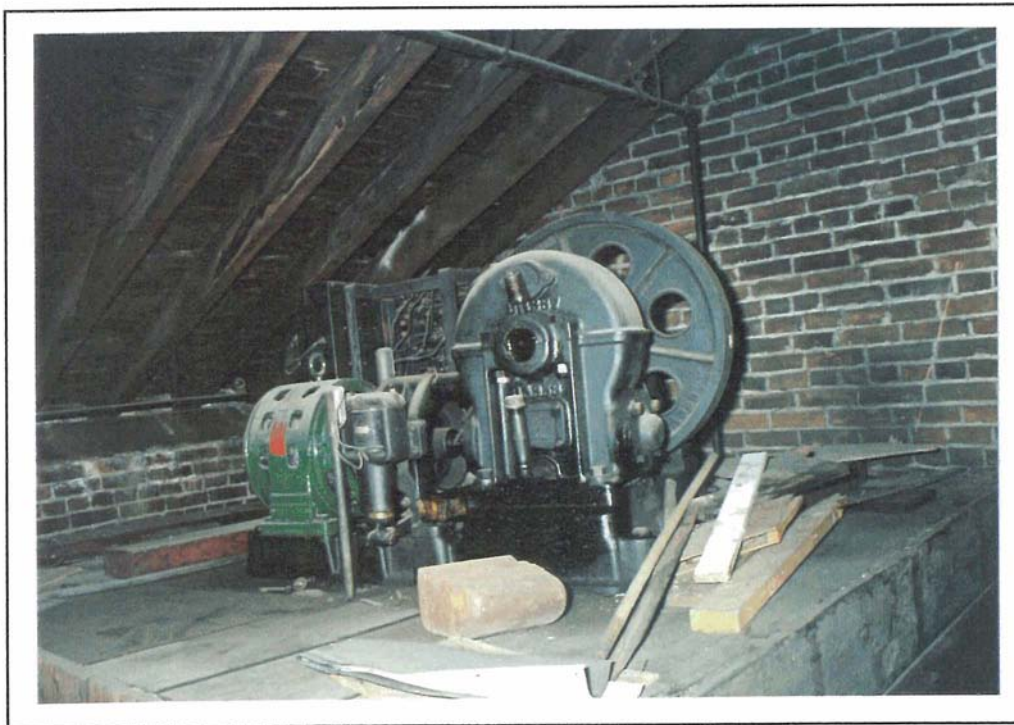
35-4-5 Barrel Ramp

				ITEM NO. 35-4-4
LOCATION	Building #35 Malting	Floor: 4	Compass: S	
ITEM NAME	Hand Winch C1910-20	Quantity: 1		
MARKINGS	None Observed			
MATERIALS	Primary: Cast iron gears and frame, wire rope			
	Secondary.. Wood crank handles			
DIMENSIONS	Height: 2'0"	Width: 1'6"	Depth: 14"	
CONDITION	Useable			
USAGE	<p>A. Distillery: Winch leads to block mounted on exterior projecting beam above double doors, permitting materials to be lifted to various floors.</p> <p>B. General:</p>			
SIGNIFICANCE	Predates installation of elevator and is a technology survival that was part of the early malting operation.			

				ITEM NO. 35-4-5
LOCATION	Building #35 Malting	Floor: 4	Compass: NE	
ITEM NAME	Barrel Ramp C1920-30	Quantity: 1		
MARKINGS	None Observed			
MATERIALS	Primary: Wood rails			
	Secondary..Iron ties and hooks			
DIMENSIONS	Height: 6'0"L	Width: 20"	Depth: 4"	
CONDITION	Serviceable			
USAGE	<p>A. Distillery: Permits the rolling of barrels into racking.</p> <p>B. General:</p>			
SIGNIFICANCE	Early technology for hand movement of barrels.			



35-4-6 Dumping Trough



35-4-718 Elevator Winding Mechanism and Car

				ITEM NO. 35-4-6
LOCATION	Building #35 Malting	Floor: 4	Compass: E	
ITEM NAME	Dumping Trough	Quantity: 1		
MARKINGS	None Observed			
MATERIALS	<p>Primary: Woodframe</p> <p>Secondary: Steel rails Tin trough and funnel Brass valve</p>			
DIMENSIONS	Height: 10'L	Width: 2'	Depth: 2'	
CONDITION	Serviceable			
USAGE	<p>A. Distillery: Portable dumping trough to permit barrel emptying in maturing warehouse.</p> <p>B. General:</p>			
SIGNIFICANCE	As part of maturing operations.			

				ITEM NO. 35-4-7 35-4-8
LOCATION	Building #35 Malting	Floor: 4	Compass: SE	
ITEM NAME	Elevator Winding Mechanism and Car C1930-50	Quantity: 1		
MARKINGS	(On motor plate) "OTIS"			
MATERIALS	<p>Primary: Iron castings for transfer case and pulley Steel framed car</p> <p>Secondary: Car is wood lined</p>			
DIMENSIONS	Height: 3'	Width: 5'6"	Depth: 3' (winder)	
CONDITION	Out of service			
USAGE	<p>A. Distillery:</p> <p>B. General: Used to transport barrels between floors.</p>			
SIGNIFICANCE	Typical freight elevator.			



36-1-1 Barrel Tongs

ITEM NO.
36-1-1

LOCATION	Building #36 Kiln	Floor: 1	Compass: E
ITEM NAME	Barrel Tongs C1920-30	Quantity: 1	
MARKINGS	None Observed		
MATERIALS	<i>Primary:</i> Forged steel		
	<i>Secondary:</i>		
DIMENSIONS	<i>Height:</i> 2'6"	<i>Width:</i> 1/2"	<i>Depth:</i>
CONDITION	Serviceable		
USAGE	A. <i>Distillery.</i> To lift barrels either with winch or to barrel scale.		
	B. <i>General:</i>		
SIGNIFICANCE	Materials handling technology related to maturing operations.		