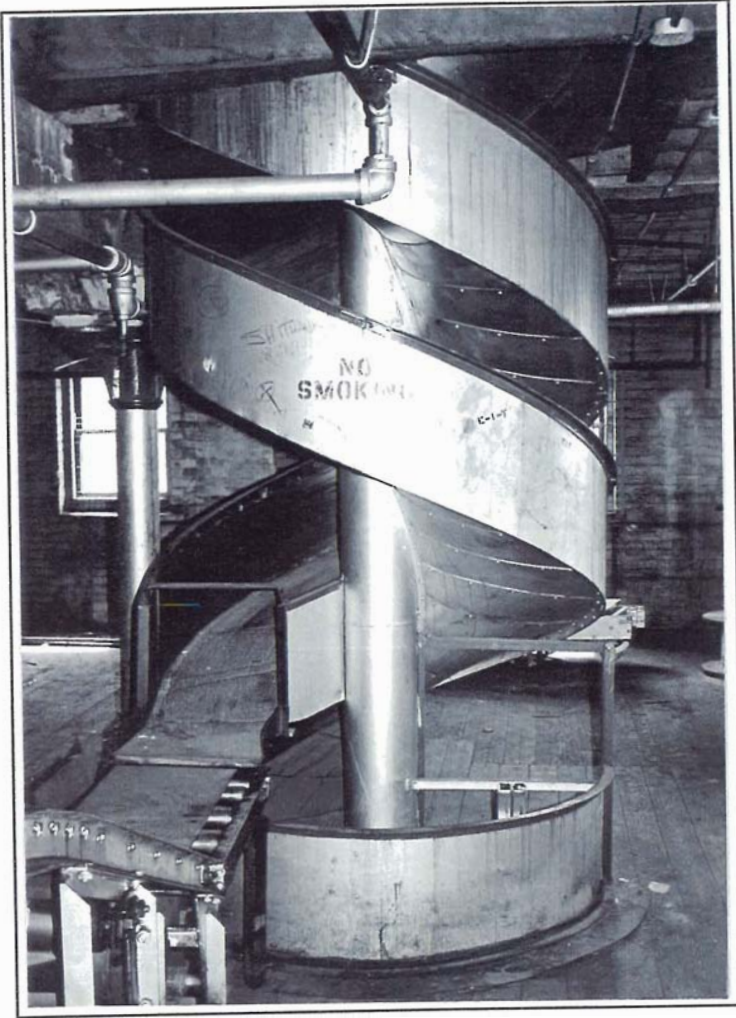


APPENDIX 2

Additional Equipment



59-1-1 Spiral Chute

ITEM NO.
59-1-1

LOCATION Building #59 Cannery **Floor:** 1-3 **Compass:** *W*

ITEM NAME Spiral Case Goods **Quantity:** 1
Chute C1950

MARKINGS None Observed

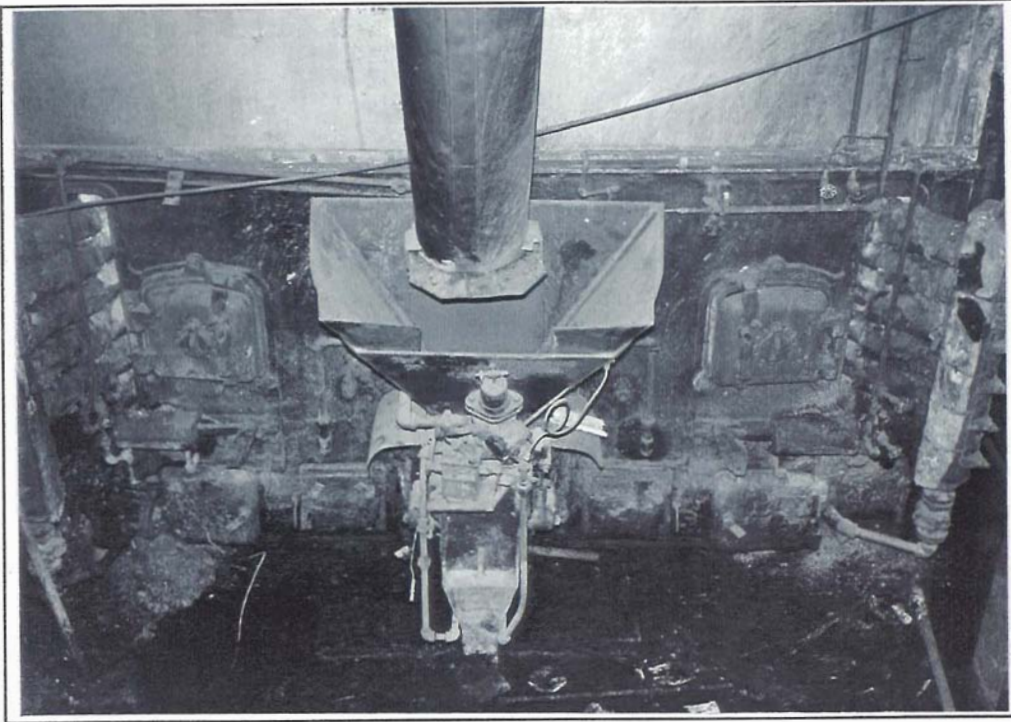
MATERIALS **Primary:** Painted Sheet Metal
Secondary:

DIMENSIONS **Height:** **Width:** 5' **Depth:**

CONDITION Serviceable

USAGE A. **Distillery..**
B. **General:** Associated with canning (or bottling) operations.
Finished goods transfer.

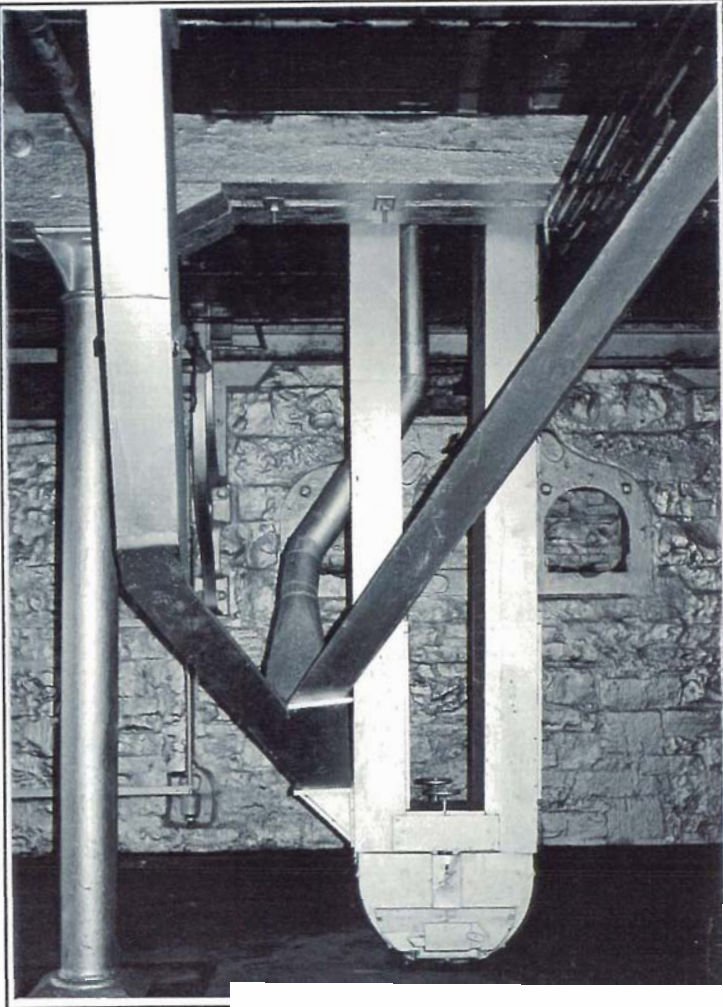
SIGNIFICANCE Materials handling - finished goods.



2-1-13 Coal Stoker and Boiler

ITEM NO.
2-1-13

LOCATION	Building #2 Boiler House	Floor: Sub	Compass: S
ITEM NAME	Coal Stoker and Boiler	Quantity: 1	
MARKINGS	"COMBUSTION ENGINEERING CORPORATION LIMITED" "MONTREAL" "TYPE E STOKER"		
MATERIALS	Primary.. Steel Castings Secondary:		
DIMENSIONS	Height: 4'	Width: 3'	Depth: 3'
CONDITION	Out of service		
USAGE	A. Distillery.. B. General: Automatic coal delivery to coal fired boiler.		
SIGNIFICANCE	Supply to boiler supplying process steam and building heat.		



3-1-6 Grain Elevator

ITEM NO.
3-1-6

LOCATION Building #3 Granary *Floor:* 1-5 *Compass:* SE

ITEM NAME Grain Elevator C1880 *Quantity:* 1

MARKINGS None observed but believed to be made by NORDYKE & MARMON.

MATERIALS *Primary:* Painted Wood
Secondary: Cast Iron

DIMENSIONS *Height:* Var. *Width:* *Depth:*

CONDITION Serviceable

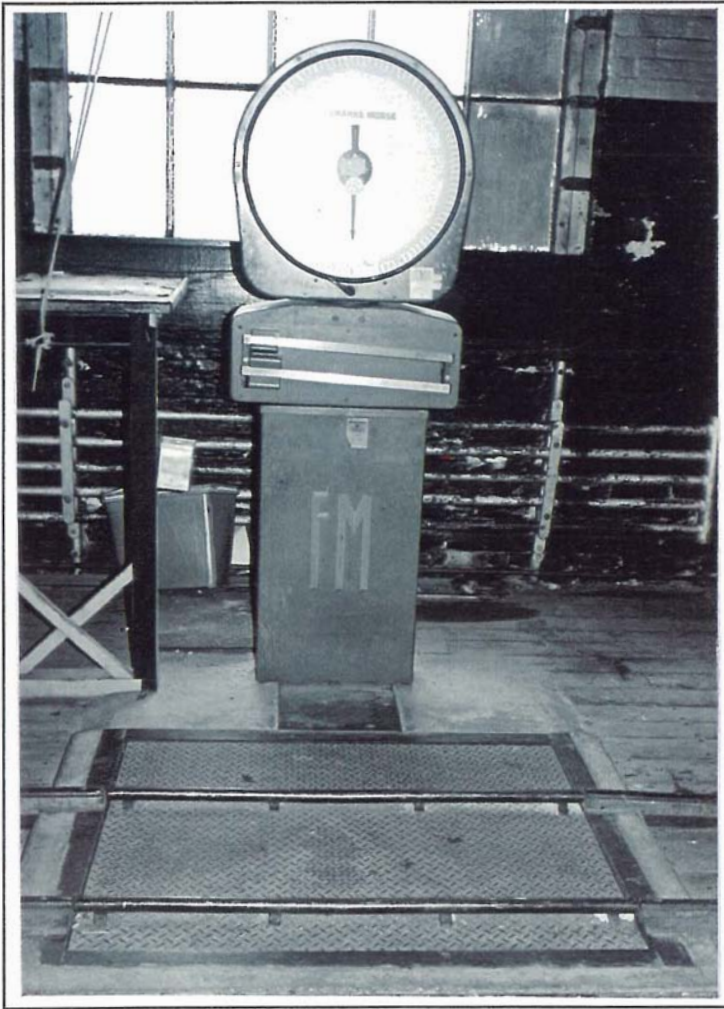
USAGE A. *Distillery:*
B. *General:* Used in granary to transport whole grains to storage bins.

SIGNIFICANCE Central to granary function of distillery operations.



ITEM NO.
61-1-11

LOCATION	Building #61 Mixing	<i>Floor:</i> 1	<i>Compass:</i> NW
ITEM NAME	Dump Trough	<i>Quantity:</i> 1	
MARKINGS	None Observed		
MATERIALS	Primary: Stainless steel and steel		
	Secondary: Wood covers		
DIMENSIONS	Height: 4"	Width: 2'	Depth: L. 21'
CONDITION	Serviceable		
USAGE	A. Distillery.. To permit the dumping of spirits from barrels for transfer to blending or storage tanks.		
	B. Genera/:		
SIGNIFICANCE	Central to blending operation of distillery.		



62-1-3 Floor Scale

ITEM NO.
62-1-3

LOCATION	Building #62 Mixing	Floor: 1	Compass: NE
ITEM NAME	Floor Scale C1950	Quantity: 1	
MARKINGS	On dial "FAIRBANKS MORSE" On body "FM"		
MATERIALS	Primary: Painted metal Secondary: Glass		
DIMENSIONS	Height: 6'	Width: 32"	Depth: 1'
CONDITION	Serviceable		
USAGE	A. Distillery: To weigh filled barrels for excise. B. General:		
SIGNIFICANCE	Central to distillery operations. Indicative of the role of excise control.		