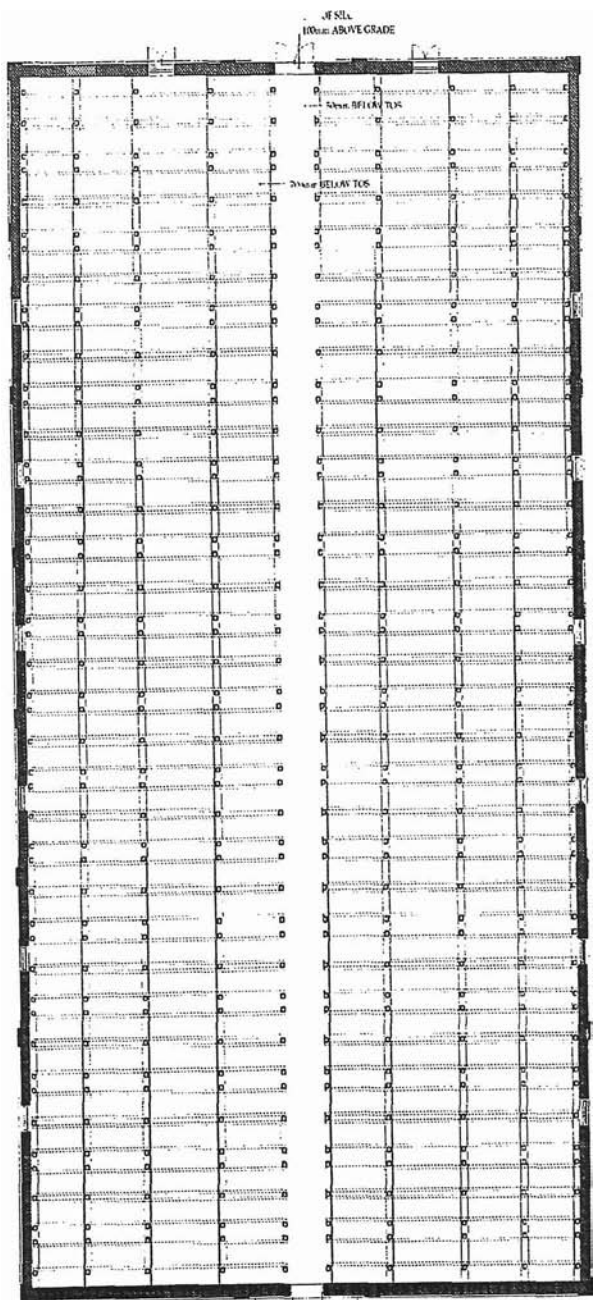
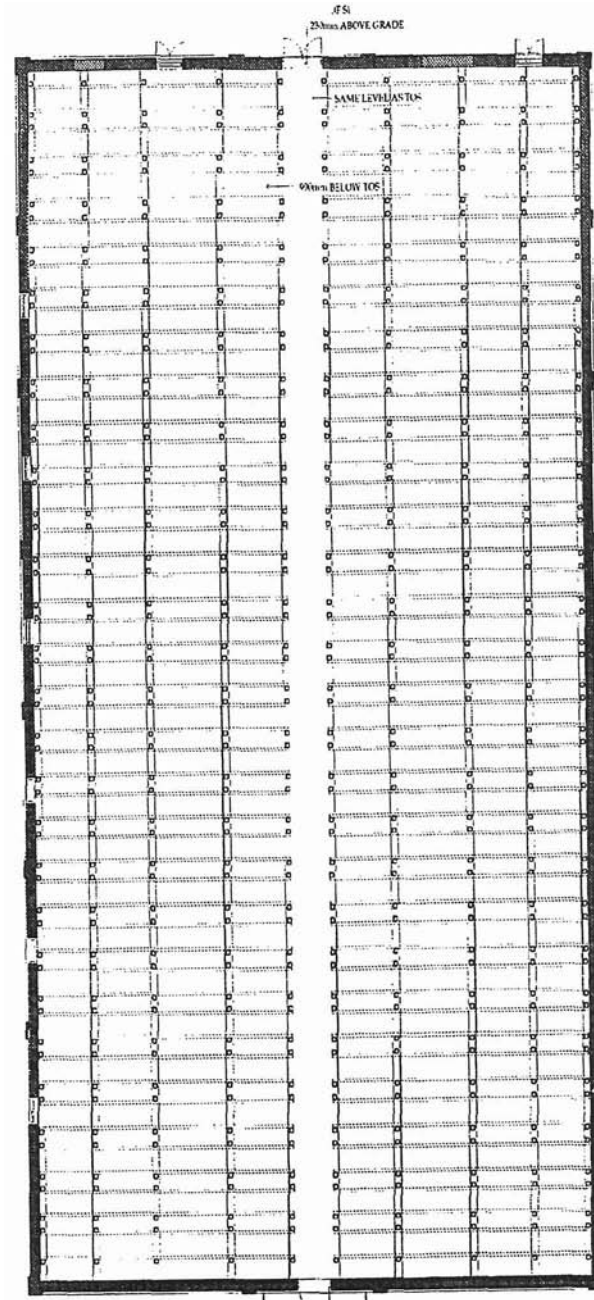


10. RACK HOUSES 'G' AND 'J'

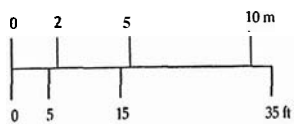


RACK HOUSE 'G'

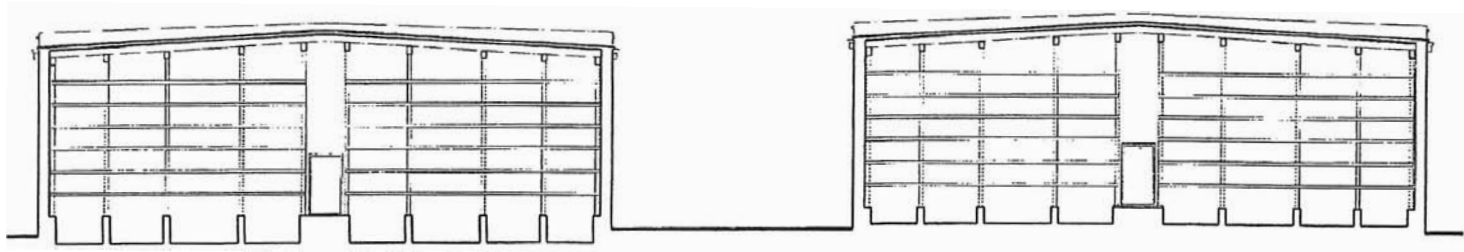


RACK HOUSE 'J'

RACK HOUSES 'G' AND 'J'
FLOOR PLANS
EXISTING



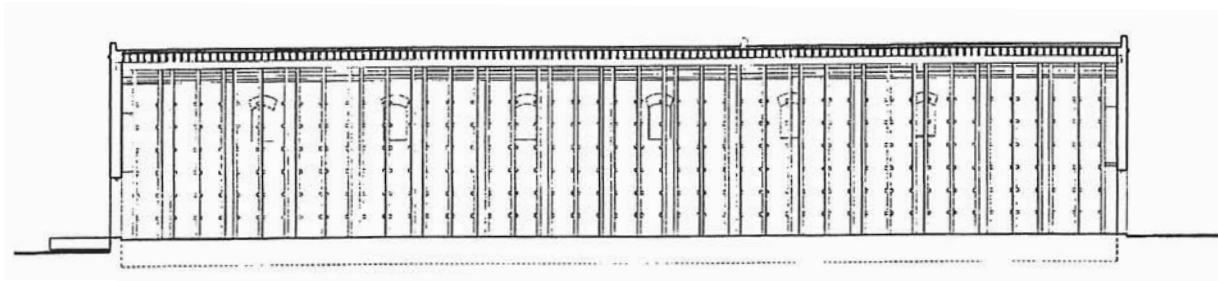
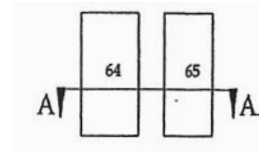
64 65



RACK HOUSE 'J'

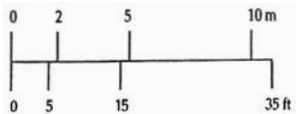
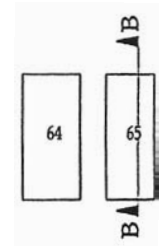
RACK HOUSE 'G'

SECTION A-A

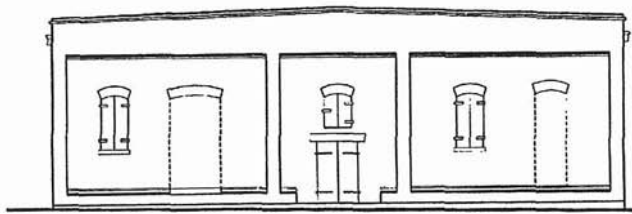


TYPICAL LONGITUDINAL SECTION
RACK HOUSE 'J'

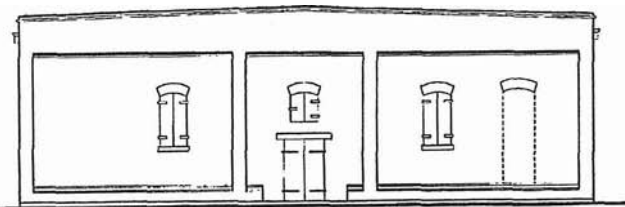
SECTION B-B



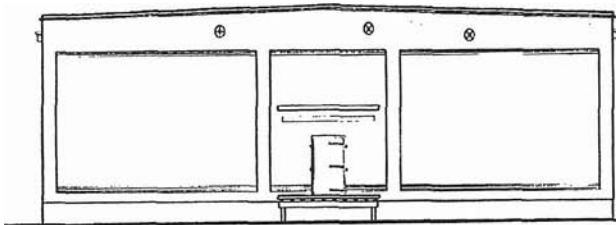
RACK HOUSES 'G' AND 'J'
SECTIONS A-A, B-B
EXISTING



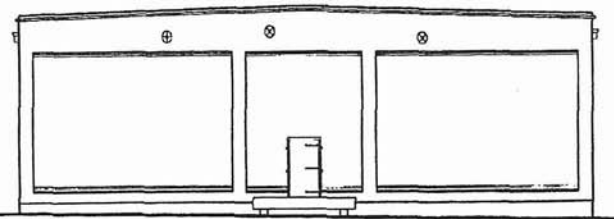
NORTH ELEVATION, RACK HOUSE 'J'



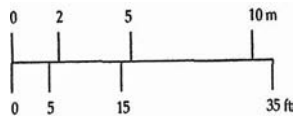
NORTH ELEVATION, RACK HOUSE 'G'



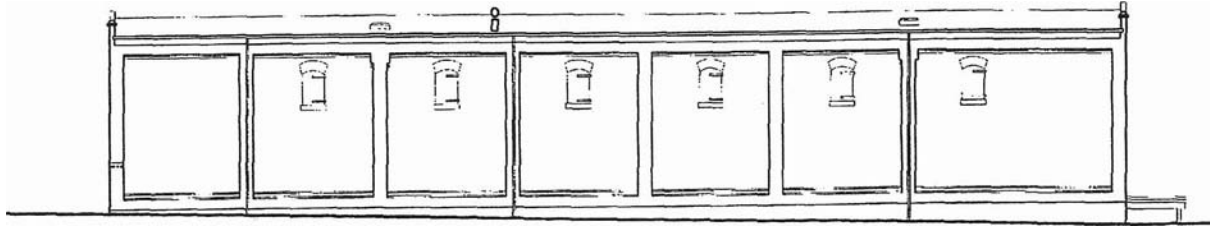
SOUTH ELEVATION, RACK HOUSE 'G'



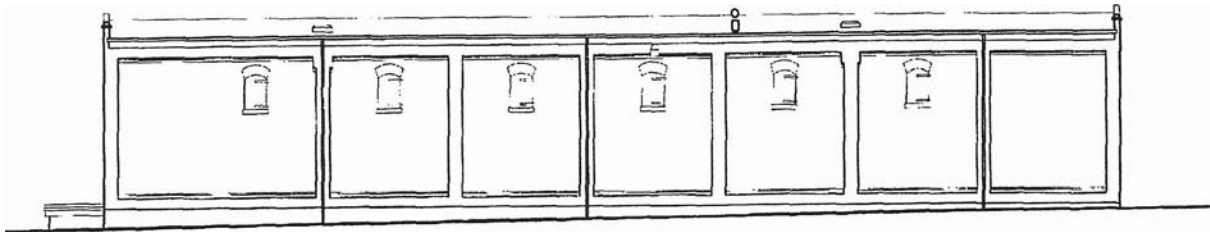
SOUTH ELEVATION, RACK HOUSE 'J'



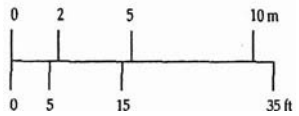
RACK HOUSES 'G' AND 'J'
 NORTH, SOUTH ELEVATIONS
 EXISTING



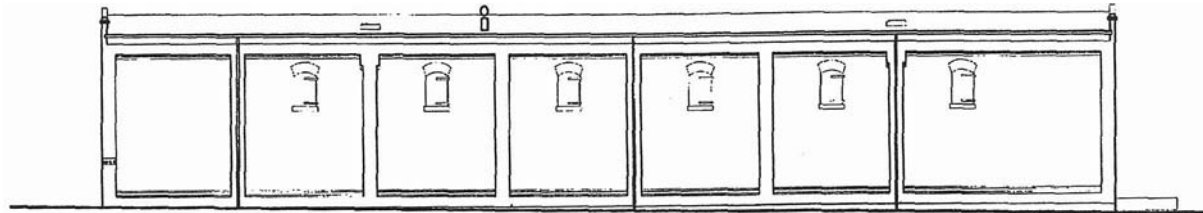
WEST ELEVATION



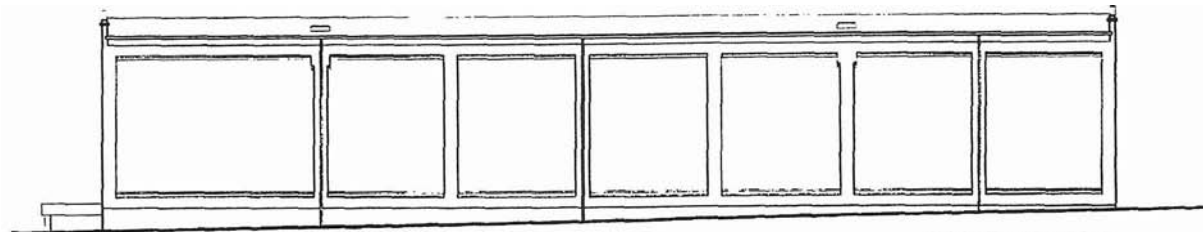
EAST ELEVATION



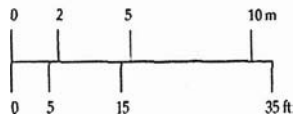
RACK HOUSE 'G'
WEST, EAST ELEVATIONS
EXISTING



WEST ELEVATION



EAST ELEVATION



RACK HOUSE 'J'
WEST, EAST ELEVATIONS
EXISTING

